

STRETCH CREWGUARD® SB SRC

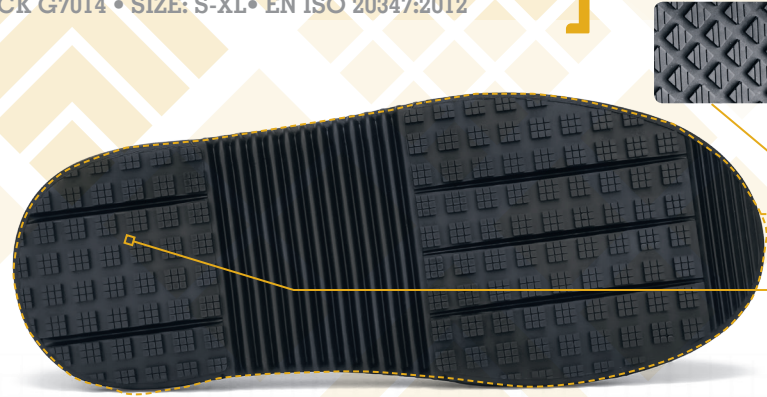
MEN'S/WOMEN'S: BLACK G7014 • SIZE: S-XL • EN ISO 20347:2012



INNOVATIVE STRETCH TECHNOLOGY
Provides a secure and snug fit over shoes



Superior SFC
SLIP-RESISTANT
outsole.



CLOG-RESISTANT OUTSOLE

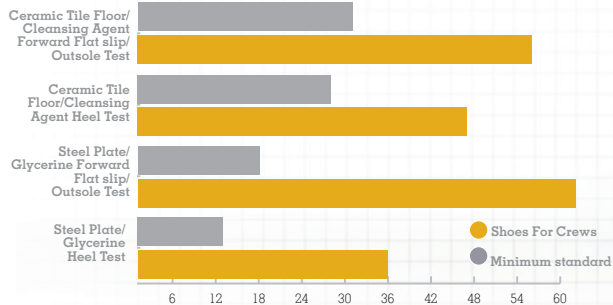
- Added depth for improved durability and wear time.
- Larger surface area covered by the outsole provides better slip-resistance.
- Clog-resistant traction lugs have wide spacing which won't let dirt and debris get stuck in the outsole.

WATER RESISTANT
designed to repel water and keep your foot dry.



CE CERTIFIED SB SRC
according to
EN ISO 20347:2012
standards

SFC GREATLY EXCEEDS INDUSTRY STANDARDS



Slip Resistance Test EN ISO 13287:2012, performed by TÜV Rheinland LGA Products GmbH in Leipzig, Germany during August 2018* On a scale where 0.0 is the absence of friction and 1.0 is very high friction (e.g. dry carpet), SFC rated .63 - more than tripling the .18 minimum standard. All SFC shoes use the Shoes For Crews patented slip-resistant outsole. Product tested: DOLCE81 76236

| CrewGuard® Sizes | XXS | XS | S | S+ | M | M+ | L | XL | XXL |
|-----------------------|-------|-------|-------|-------|-------|-------|-------|-------|-------|
| STYLE 53: Men's | - | 35-37 | 37-38 | 39-41 | 41-42 | 43-44 | 44-45 | 46-48 | 49-51 |
| STYLE 53: Women's | 32-34 | 35-38 | 38-39 | 40-42 | 42-43 | 44-45 | - | - | - |
| STYLE G7014 Men/Women | - | - | 34-37 | - | 38-41 | - | 42-45 | 46-48 | - |

Above chart is an indication ONLY, depending on the type of footwear worn, this can vary

STRETCH CREWGUARD® - DATA GUIDE

Certification: EN ISO 20347:2012 SB SRC

Upper Material: Rubber

Lining Material: Rubber

Midssole Material: N/A

Outsole Material: Rubber

Safety Toe Cap: N/A

COO: China