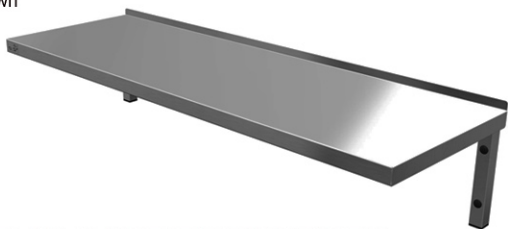


SOLID STEEL WALL SHELF (HEAVY DUTY) (300mm DEEP)

SPECIFICATION

- Commercial s/steel shelving supported on cantilever box section brackets, perfect for back of house equipment storage.
- Available in 600 up to 2400mm lengths (100mm increments) x 300mm deep.
- Available in 600, 900, 1200, 1500, 1800, 2100 and 2400 mm lengths x 400 mm deep..
- Durable 1.2 mm thick 430 gd. solid steel shelf (250mm high).
- Steel shelf has a 35 mm deep turn down to 3 faces and a rear wall up stand of 20 mm.
- Pre-drilled box section support brackets (430 gd 1.2 thk. 30 mm sq) for fixing shelf insitu - Ø 6mm fixing holes (Fixings Not Supplied).
- Black heat resistant nylon bungs supplied to blank off through - fixing holes on face of brackets (Ø 16mm).
- Double sided tape strips supplied, for attaching shelf to wall brackets.
- Additional support brackets provided, depending on the shelf length selected.
- Plastic bungs fitted to wall bracket ends.

Code	Description	Height (mm)	Max. Load (kg)
QWS63HD2	600 (L)×300 (D) Solid Wall Shelf (H.Duty)	250	35
QWS73HD2	700 (L)×300 (D) Solid Wall Shelf (H.Duty)	250	35
QWS83HD2	800 (L)×300 (D) Solid Wall Shelf (H.Duty)	250	35
QWS93HD2	900 (L)×300 (D) Solid Wall Shelf (H.Duty)	250	35
QWS103HD2	1000 (L)×300 (D) Solid Wall Shelf (H.Duty)	250	35
QWS113HD2	1100 (L)×300 (D) Solid Wall Shelf (H.Duty)	250	35
QWS123HD2	1200 (L)×300 (D) Solid Wall Shelf (H.Duty)	250	35
QWS133HD2	1300 (L)×300 (D) Solid Wall Shelf (H.Duty)	250	35
QWS143HD2	1400 (L)×300 (D) Solid Wall Shelf (H.Duty)	250	35
QWS153HD3	1500 (L)×300 (D) Solid Wall Shelf (H.Duty)	250	65
QWS163HD3	1600 (L)×300 (D) Solid Wall Shelf (H.Duty)	250	65
QWS173HD3	1700 (L)×300 (D) Solid Wall Shelf (H.Duty)	250	65
QWS183HD3	1800 (L)×300 (D) Solid Wall Shelf (H.Duty)	250	65
QWS193HD3	1900 (L)×300 (D) Solid Wall Shelf (H.Duty)	250	65
QWS203HD3	2000 (L)×300 (D) Solid Wall Shelf (H.Duty)	250	65
QWS213HD3	2100 (L)×300 (D) Solid Wall Shelf (H.Duty)	250	65
QWS223HD3	2200 (L)×300 (D) Solid Wall Shelf (H.Duty)	250	65
QWS233HD3	2300 (L)×300 (D) Solid Wall Shelf (H.Duty)	250	65
QWS243HD4	2400 (L)×300 (D) Solid Wall Shelf (H.Duty)	250	100



SOLID STEEL WALL SHELF (HEAVY DUTY) (400mm DEEP)

Code	Description	Height (mm)	Max. Load (kg)
QWS64HD2	600 (L)×400 (D) Solid Wall Shelf (H.Duty)	250	35
QWS94HD2	900 (L)×400 (D) Solid Wall Shelf (H.Duty)	250	35
QWS124HD2	1200 (L)×400 (D) Solid Wall Shelf (H.Duty)	250	35
QWS154HD3	1500 (L)×400 (D) Solid Wall Shelf (H.Duty)	250	65
QWS184HD3	1800 (L)×400 (D) Solid Wall Shelf (H.Duty)	250	65
QWS214HD3	2100 (L)×400 (D) Solid Wall Shelf (H.Duty)	250	65
QWS244HD4	2400 (L)×400 (D) Solid Wall Shelf (H.Duty)	250	100

HEAVY DUTY SOLID SHELF 400mm DEEP

QWS64HD2 600 x 400

QWS94HD2 900 x 400

QWS124HD2 1200 x 400

QWS154HD3 1500 x 400

QWS184HD3 1800 x 400

QWS214HD3 2100 x 400

QWS244HD4 2400 x 400



QUICK SERVICE HEAVY DUTY WALL SHELVING

Introducing Quick Service
A range of popular sized, short lead time, high quality commercial fabrication products, held in stock and all available within 2-6 working days after order.



HEAVY DUTY SOLID SHELF 300mm DEEP

QWS63HD2 600 x 300

QWS73HD2 700 x 300

QWS83HD2 800 x 300

QWS93HD2 900 x 300

QWS103HD2 1000 x 300

QWS113HD2 1100 x 300

QWS123HD2 1200 x 300

QWS133HD2 1300 x 300

QWS143HD2 1400 x 300

QWS153HD3 1500 x 300

QWS163HD3 1600 x 300

QWS173HD3 1700 x 300

QWS183HD3 1800 x 300

QWS193HD3 1900 x 300

QWS203HD3 2000 x 300

QWS213HD3 2100 x 300

QWS223HD3 2200 x 300

QWS233HD3 2300 x 300

QWS243HD4 2400 x 300

Download All Technical Drawings From
www.cedfabsltd.co.uk



Tel : 01254 238 282

CED Fabrications Limited
Units A1-A4 Falcon Court
Clayton Business Park
Clayton-Le-Moors
Hyndburn
Lancashire
BB5 5JD

www.cedfabsltd.co.uk
sales@cedlimited.com

