



Test Report

No.: SHHL1805027040GS

Date: AUG. 03, 2018

Page: 1 of 15

TABLECRAFT PRODUCTS COMPANY.

801 LAKESIDE DR., GURNEE, ILLINOIS 60031 USA.

The following sample(s) was/were submitted and identified by the client as:

Sample Description : EU WOOD HIGH CHAIR.
Style No. : EU63, EU65 AND EU66
Item No. : EU63, EU65 AND EU66
Buyer : TABLECRAFT PRODUCTS COMPANY.
P.O. No. : 100763
Manufacturer :
Supplier :
Country of Origin : VIETNAM
Country of Destination : U.K.
Sample Receiving Date : MAY 25, 2018
Resubmitted Sample Date : JUL. 04, 2018
Further Information : JUL. 31, 2018
Testing Period : MAY 25, 2018 TO AUG. 03, 2018
Test Performed : SELECTED TEST(S) AS REQUESTED BY APPLICANT
Test Requested : 1. EN 14988: 2017 - CHILDREN'S HIGH CHAIR
REQUIREMENTS AND TEST METHODS
2. EK DECISION 01-16 (WITH REFERENCE TO DIN
68878:2011, CL. 6.3.2)
Test Result(s) : FOR FURTHER DETAILS, PLEASE REFER TO THE
FOLLOWING PAGE(S)
Conclusion : THE SUBMITTED SAMPLE MET THE TEST
REQUIREMENT.

Signed for and on behalf of
SGS-CSTC Standards Technical Services (Shanghai) Co., Ltd.

Melody Zhang
Authorized Signatory



Unless otherwise agreed in writing, this document is issued by the Company subject to its General Conditions of Service printed overleaf, available on request or accessible at <http://www.sgs.com/en/Terms-and-Conditions.aspx> and, for electronic format documents, subject to Terms and Conditions for Electronic Documents at <http://www.sgs.com/en/Terms-and-Conditions/Terms-e-Document.aspx>. Attention is drawn to the limitation of liability, indemnification and jurisdiction issues defined therein. Any holder of this document is advised that information contained hereon reflects the Company's findings at the time of its intervention only and within the limits of Client's instructions, if any. The Company's sole responsibility is to its Client and this document does not exonerate parties to a transaction from exercising all their rights and obligations under the transaction documents. This document cannot be reproduced except in full, without prior written approval of the Company. Any unauthorized alteration, forgery or falsification of the content or appearance of this document is unlawful and offenders may be prosecuted to the fullest extent of the law. Unless otherwise stated the results shown in this test report refer only to the sample(s) tested and such sample(s) are retained for 30 days only.
Attention: To check the authenticity of testing inspection report & certificate, please contact us at telephone: (86-755) 8507 1443; or email: CN.Qcscheck@sgs.com
4th Building, No. 888, Yishan Road, Xuhui District Shanghai, China 200233 1 (86) 400 960 9661 1 (86-21) 6115 6899 www.sgsgroup.com.cn
中国·上海·徐汇区宜山路888号4号楼 邮编: 200233 1 (86) 400 960 9661 1 (86-21) 6115 6899 sgs.china@sgs.com

Member of the SGS Group (SGS SA)



Test Report

No.: SHHL1805027040GS

Date: AUG. 03, 2018

Page: 2 of 15

Test Conducted:

1. EN 14988: 2017 - CHILDREN'S HIGH CHAIR REQUIREMENTS AND TEST METHODS

Scope: This European Standard specifies safety requirements for children's high chairs intended for children from 6months to 36months of age.

If the product can be converted into a product for which an EN safety standard exists, the product shall also fulfill the requirements of that standard.

1. Number of test specimen: 3 Pcs of sample.
2. Test Result: Details Shown as Following Table:

Sample A	Sample B	Sample C
L: 502 mm W: 510 mm H: 747 mm N.W: 5.7 kg	L: 505 mm W: 510 mm H: 748 mm N.W: 5.9 kg	L: 502 mm W: 510 mm H: 749 mm N.W: 5.8 kg

Clause	Test Requirements/ Items	Rating																																							
6	Chemical hazards - Migration of certain elements Separate samples may be used for these tests. The migration of elements from surface materials located on or above the plane defined by the seat surface with the exception of the back of the backrest shall not exceed the limits listed in Table 1 when tested in accordance with EN 71-3.	Pass (See Chemical Test Result)																																							
	Element		mg/kg	Aluminium	70 000	Antimony	560	Arsenic	47	Barium	18 750	Boron	15 000	Cadmium	17	Chromium (III)	460	Chromium (VI)	0,2	Cobalt	130	Copper	7 700	Lead	160	Manganese	15 000	Mercury	94	Nickel	930	Selenium	460	Strontium	56 000	Tin	180 000	Organic tin	12	Zinc	46 000
	Element		mg/kg																																						
	Aluminium		70 000																																						
	Antimony		560																																						
	Arsenic		47																																						
	Barium		18 750																																						
	Boron		15 000																																						
	Cadmium		17																																						
	Chromium (III)		460																																						
	Chromium (VI)		0,2																																						
	Cobalt		130																																						
	Copper		7 700																																						
	Lead		160																																						
	Manganese		15 000																																						
	Mercury		94																																						
	Nickel		930																																						
	Selenium		460																																						
	Strontium		56 000																																						
	Tin		180 000																																						
	Organic tin		12																																						
Zinc	46 000																																								



Unless otherwise agreed in writing, this document is issued by the Company subject to its General Conditions of Service printed overleaf, available on request or accessible at <http://www.sgs.com/en/Terms-and-Conditions.aspx> and, for electronic format documents, subject to Terms and Conditions for Electronic Documents at <http://www.sgs.com/en/Terms-and-Conditions/Terms-e-Document.aspx>. Attention is drawn to the limitation of liability, indemnification and jurisdiction issues defined therein. Any holder of this document is advised that information contained hereon reflects the Company's findings at the time of its intervention only and within the limits of Client's instructions, if any. The Company's sole responsibility is to its Client and this document does not exonerate parties to a transaction from exercising all their rights and obligations under the transaction documents. This document cannot be reproduced except in full, without prior written approval of the Company. Any unauthorized alteration, forgery or falsification of the content or appearance of this document is unlawful and offenders may be prosecuted to the fullest extent of the law. Unless otherwise stated the results shown in this test report refer only to the sample(s) tested and such sample(s) are retained for 30 days only.

Attention: To check the authenticity of testing inspection report & certificate, please contact us at telephone: (86-755) 8507 1443; or email: CN.Qoscheck@sgs.com

4th Building, No.888, Yishan Road, Xuhui District Shanghai, China 200233 1 (86) 400 960 9661 1 (86-21) 6115 6889 www.sgs.com
中国·上海·徐汇区宜山路888号4号楼 邮编: 200233 1 (86) 400 960 9661 1 (86-21) 6115 6889 sgs.china@sgs.com

Test Report

No.: SHHL1805027040GS

Date: AUG. 03, 2018

Page: 3 of 15

Clause	Test Requirements/ Items	Rating
7	Thermal hazards Separate samples may be used for these tests. This clause applies only to textiles, coated textiles and plastic coverings. Hook and loop fasteners, cords and alike are excluded. When tested in accordance with EN 71-2:2011+A1:2014, 5.5, there shall be no surface flash.	N/A
8	Mechanical hazards	
8.1	Hazards caused by folding of the product	
8.1.1	Requirements	
8.1.1.1	General There shall be at least one locking mechanism which prevents a high chair from folding whilst in use and also when a child is being placed into and removed from the high chair.	N/A
8.1.1.2	Incomplete deployment In order to prevent the hazards due to incomplete deployment, the high chair shall fulfil one of the following: a) the weight of the child in the high chair shall act to prevent the folding; or b) at least one locking device shall engage automatically, when the product is ready for use.	N/A
8.1.1.3	Unintentional folding of the high chair Unintentional folding of the high chair shall be prevented. This requirement is fulfilled if one of the following conditions is met before and after testing in accordance with 8.1.2.1: a) at least one operating device requires a minimum force of 50 N to activate, with and without test mass A on the seat, or b) folding is only possible if at least one locking mechanism requires the use of a tool, or c) folding is only possible, when two independent operating devices are operated simultaneously, or d) there are two or more automatically engaging locking devices that both cannot be released by one single action, or e) folding of the high chair requires two consecutive actions, the first of which shall be maintained while the second is carried out.	N/A
8.1.1.4	Locking mechanism strength When tested in accordance with 8.1.2.2, the high chair shall not fold and the locking mechanism shall remain engaged.	N/A
8.2	Hazards caused by height adjustment	
8.2.1	General High chairs in which the seat height cannot be adjusted either due to the construction of the high chair or when the child is inside the high chair are excluded from this requirement. There shall be locking mechanism(s) to prevent the seat unit of a high chair from moving from a higher to a lower position	N/A



Unless otherwise agreed in writing, this document is issued by the Company subject to its General Conditions of Service printed overleaf, available on request or accessible at <http://www.sgs.com/en/Terms-and-Conditions.aspx> and, for electronic format documents, subject to Terms and Conditions for Electronic Documents at <http://www.sgs.com/en/Terms-and-Conditions/Terms-e-Document.aspx>. Attention is drawn to the limitation of liability, indemnification and jurisdiction issues defined therein. Any holder of this document is advised that information contained hereon reflects the Company's findings at the time of its intervention only and within the limits of Client's instructions, if any. The Company's sole responsibility is to its Client and this document does not exonerate parties to a transaction from exercising all their rights and obligations under the transaction documents. This document cannot be reproduced except in full, without prior written approval of the Company. Any unauthorized alteration, forgery or falsification of the content or appearance of this document is unlawful and offenders may be prosecuted to the fullest extent of the law. Unless otherwise stated the results shown in this test report refer only to the sample(s) tested and such sample(s) are retained for 30 days only.

Attention: To check the authenticity of testing inspection report & certificate, please contact us at telephone: (86-755) 4307 1443; or email: CN.Qoscheck@sgs.com

4th Building, No. 889, Yishan Road, Xuhui District Shanghai, China 200233 1 (86) 400 960 9661 1 (86-21) 6115 6899 www.sgsgroup.com.cn
 中国·上海·徐汇区宜山路889号4号楼 邮编: 200233 1 (86) 400 960 9661 1 (86-21) 6115 6899 sgs.china@sgs.com

Test Report

No.: SHHL1805027040GS

Date: AUG. 03, 2018

Page: 4 of 15

Clause	Test Requirements/ Items	Rating
8.2.2	Incomplete seat height adjustment In order to prevent hazards due to incomplete seat height adjustment, at least one locking device shall engage automatically when the seat is adjusted in height.	N/A
8.2.3	Unintentional release of the seat height adjustment mechanism In order to prevent unintentional release of the seat adjustment mechanism, one of the following requirements shall be fulfilled before and after testing in accordance with 8.1.2.1: a) at least one operating device requires a minimum force of 50 N to activate, with and without test mass A on the seat, or b) height adjustment requires the use of a tool, or c) release is only possible when two independent operating devices are operated simultaneously, or d) there are two or more automatically engaging locking devices that both cannot be released by one single action, or e) height adjustment requires two consecutive actions, the first of which shall be maintained while the second is carried out.	N/A
8.3	Entrapment hazards	
8.3.1	Entrapment of fingers	
8.3.1.1	Requirement With the exception of the back of the backrest, parts of the high chair from the floor up to and including the under-surface of the seat and buckles and adjusters of the restraint system, there shall be no completely bounded circular openings in rigid materials between 7 mm and 12 mm, which are deeper than 10 mm, when tested in accordance with 8.3.1.2.	Pass
8.3.2	Entrapment of head	
8.3.2.1	Requirements With the exception of the entrance to the seat unit, the two openings for the child's legs and openings in the frame above the level of the top surface of the lateral protection, there shall be no holes, gaps or openings above the seat surface which allow the small torso probe to pass through when tested according to 8.3.2.2.	Pass
8.4	Hazards caused by moving parts	



Unless otherwise agreed in writing, this document is issued by the Company subject to its General Conditions of Service printed overleaf, available on request or accessible at <http://www.sgs.com/en/Terms-and-Conditions.aspx> and, for electronic format documents, subject to Terms and Conditions for Electronic Documents at <http://www.sgs.com/en/Terms-and-Conditions/Terms-e-Document.aspx>. Attention is drawn to the limitation of liability, indemnification and jurisdiction issues defined therein. Any holder of this document is advised that information contained hereon reflects the Company's findings at the time of its intervention only and within the limits of Client's instructions, if any. The Company's sole responsibility is to its Client and this document does not exonerate parties to a transaction from exercising all their rights and obligations under the transaction documents. This document cannot be reproduced except in full, without prior written approval of the Company. Any unauthorized alteration, forgery or falsification of the content or appearance of this document is unlawful and offenders may be prosecuted to the fullest extent of the law. Unless otherwise stated the results shown in this test report refer only to the sample(s) tested and such sample(s) are retained for 30 days only.

Attention: To check the authenticity of testing inspection report & certificate, please contact us at telephone: (86-755) 8507 1443; or email: CN.Qoscheck@sgs.com

4th Building, No.888, Yishan Road, Xuhui District Shanghai, China 200233 1 (86) 400 960 9661 1 (86-21) 6115 6889 www.sgs.com
 中国·上海·徐汇区宜山路888号4号楼 邮编: 200233 1 (86) 400 960 9661 1 (86-21) 6115 6889 sgs.china@sgs.com

Test Report

No.: SHHL1805027040GS

Date: AUG. 03, 2018

Page: 5 of 15

Clause	Test Requirements/ Items	Rating
8.4.1	Requirements on compression points The back of the backrest, parts from the floor up to and including the under-surface of the seat and buckles of the restraint system are excluded from the following requirement. After the high chair has been set up for normal use in accordance with the manufacturer's instructions, there shall be no accessible hazardous compression points, which can close to less than 12 mm, unless they are always less than 5 mm, as the result of: a) movement of the high chair; or b) movements of the child using the high chair; or c) the application of an external force (either by another child or, unintentionally, by the carer, or by a powered mechanism). Hazardous compression points between the tray and the structure shall be assessed by applying a force of 50 N in the most onerous directions on the tray.	Pass
8.4.2	Requirements for shearing points The back of the backrest, parts from the floor up to and including the under-surface of the seat and buckles of the restraint system are excluded from the following requirement. After the high chair has been set up for normal use in accordance with the manufacturer's instructions there shall be no accessible hazardous shearing points which can close to less than 12 mm, as the result of: a) movement of the high chair; or b) the movement of the child using the high chair; or c) the application of an external force (either by another child or, unintentionally, by the carer, or by a powered mechanism).	Pass
8.5	Entanglement hazards	
8.5.1	Requirements The restraint system is excluded from this clause. Cords, ribbons and similar parts shall have a maximum free length of 220 mm when tested in accordance with 8.5.2.	N/A
	Where cords, ribbons and similar parts are attached to the high chair together or within 80 mm of each other, all single cords shall have a maximum free length of 220 mm and the combined length from one loose end to the end of another loose end shall be a maximum of 360 mm (see Figure 12).	N/A
8.5.2	Loops shall have a maximum peripheral dimension of 360 mm, when tested in accordance with 8.5.2.	N/A
	Monofilament threads shall not be used.	N/A
8.6	Choking and ingestion hazards	
8.6.1	Requirements Any component that is considered capable of being gripped by a child in accordance with 8.6.2.1 shall be tested in accordance with 8.6.2.2 and 8.6.2.3. Any component or part of a component that is removed shall not fit entirely within the small parts cylinder specified in 5.11.	Pass



Unless otherwise agreed in writing, this document is issued by the Company subject to its General Conditions of Service printed overleaf, available on request or accessible at <http://www.sgs.com/en/Terms-and-Conditions.aspx> and, for electronic format documents, subject to Terms and Conditions for Electronic Documents at <http://www.sgs.com/en/Terms-and-Conditions/Terms-e-Document.aspx>. Attention is drawn to the limitation of liability, indemnification and jurisdiction issues defined therein. Any holder of this document is advised that information contained hereon reflects the Company's findings at the time of its intervention only and within the limits of Client's instructions, if any. The Company's sole responsibility is to its Client and this document does not exonerate parties to a transaction from exercising all their rights and obligations under the transaction documents. This document cannot be reproduced except in full, without prior written approval of the Company. Any unauthorized alteration, forgery or falsification of the content or appearance of this document is unlawful and offenders may be prosecuted to the fullest extent of the law. Unless otherwise stated the results shown in this test report refer only to the sample(s) tested and such sample(s) are retained for 30 days only.

Attention: To check the authenticity of testing inspection report & certificate, please contact us at telephone: (86-755) 8507 1443; or email: CN.Qoscheck@sgs.com

4th Building, No.889, Yishan Road, Xuhui District Shanghai, China 200233 1 (86) 400 960 9661 1 (86-21) 6115 6899 www.sgsgroup.com.cn
中国·上海·徐汇区宜山路889号4号楼 邮编: 200233 1 (86) 400 960 9661 1 (86-21) 6115 6899 e_sgs.china@sgs.com

Test Report

No.: SHHL1805027040GS

Date: AUG. 03, 2018

Page: 6 of 15

Clause	Test Requirements/ Items	Rating
	With the exception of the back of the backrest, parts from the floor up to and including the under-surface of the seat, and buckles and adjusters of the restraint system, parts of a high chair containing filling material shall have at least one covering.	N/A
	After testing in accordance with 8.6.2.4, it shall not be possible to insert the 12 mm probe by more than 10 mm (see 5.9) with a force of 30 N through any opening in the covering materials or their joints that gives access to the filling material.	N/A
8.7	Hazards caused by edges, corners and protruding parts All accessible edges, corners and protruding parts on the high chair shall be rounded or chamfered and free from burrs.	Pass
8.8	Strength and durability hazards	
8.8.1	Requirements Connecting screws for direct fastening, e.g. self-tapping screws, shall not be used for the assembly of any component that is designed to be removed or loosened when dismantling the high chair for the purpose of transportation or storage.	Pass
	After completing all the tests in accordance with 8.8.2, 8.8.3, 8.8.4, 8.8.5, 8.8.6.1, 8.8.6.2 and 8.8.6.3, the requirements in 8.1, 8.3 and 8.7 shall be fulfilled and the safety and functions of the high chair shall be unimpaired.	Pass
8.8.6	Tray tests	
8.8.6.1	Requirements When tested according to 8.8.6.2, the tray shall not break or become detached and its function shall be unimpaired.	N/A
	When tested according to 8.8.6.3, the high chair shall not overturn. When tested according to 8.8.6.4, the tray shall fulfil the requirements of 8.3.1, 8.4, 8.6 and 8.7 and its function shall be unimpaired.	N/A
8.9	Hazards from falls out of the high chair	
8.9.1	Restraint system	
8.9.1.1	Requirements on restraint systems	
8.9.1.1.1*	General requirements The high chair shall have either an active restraint system complying with 8.9.1.1.2 or a passive restraint system complying with 8.9.1.1.3.	Pass
	If the backrest can be reclined to less than 60° to the horizontal measured in accordance with 8.9.1.2.1, the product shall have an active restraint system (see 8.9.1.1.2).	Pass
	Straps of the restraint system, if any, shall have a minimum width of 19 mm.	Pass
	All parts of the restraint system shall function as intended before and after testing in accordance with 8.9.1.2.3.	Pass
	The maximum slippage of the straps through any type of adjuster shall be 20 mm, when tested in accordance with 8.9.1.2.4.	Pass
	After testing in accordance with 8.9.1.2.4, adjusters and buckles shall function as intended.	Pass



Unless otherwise agreed in writing, this document is issued by the Company subject to its General Conditions of Service printed overleaf, available on request or accessible at <http://www.sgs.com/en/Terms-and-Conditions.aspx> and, for electronic format documents, subject to Terms and Conditions for Electronic Documents at <http://www.sgs.com/en/Terms-and-Conditions/Terms-e-Document.aspx>. Attention is drawn to the limitation of liability, indemnification and jurisdiction issues defined therein. Any holder of this document is advised that information contained hereon reflects the Company's findings at the time of its intervention only and within the limits of Client's instructions, if any. The Company's sole responsibility is to its Client and this document does not exonerate parties to a transaction from exercising all their rights and obligations under the transaction documents. This document cannot be reproduced except in full, without prior written approval of the Company. Any unauthorized alteration, forgery or falsification of the content or appearance of this document is unlawful and offenders may be prosecuted to the fullest extent of the law. Unless otherwise stated the results shown in this test report refer only to the sample(s) tested and such sample(s) are retained for 30 days only.

Attention: To check the authenticity of testing inspection report & certificate, please contact us at telephone: (86-755) 4307 1443; or email: CN.Qoscheck@sgs.com

SGS China Inspection & Testing Services (Shanghai) Co., Ltd.
 4th Building, No. 889, Yishan Road, Xuhui District Shanghai, China 200233 1 (86) 400 960 9561 1 (86-21) 6115 6899 www.sgschina.com.cn
 中国·上海·徐汇区宜山路889号4号楼 邮编: 200233 1 (86) 400 960 9561 1 (86-21) 6115 6899 e sgs.china@sgs.com

Test Report

No.: SHHL1805027040GS

Date: AUG. 03, 2018

Page: 7 of 15

Clause	Test Requirements/ Items	Rating
	When a high chair is fitted with attachment points for an additional harness complying with EN 13210 as described in the instructions for use, these shall function as intended after testing in accordance with 8.9.1.2.2. The attachment points shall be independently fixed and shall at all times remain within 50 mm in front of and not more than 75 mm above the junction line, i.e. in the shaded area shown in Figure 16.	N/A
8.9.1.1.2*	Requirements for high chairs with an active restraint system The active restraint system shall be supplied with the high chair.	Pass
	The high chair shall be fitted with lateral protection complying with 8.9.2.2.	Pass
	The restraint system shall be adjustable to the size of the child and shall comprise of at least one of the following: a) a waist restraint and a crotch restraint, where the crotch restraint shall be such that the waist restraint can be used only in conjunction with it; or b) an integral restraint system comprising of either: 1) a crotch restraint, a waist restraint and shoulder restraints, where the crotch restraint shall be such that the waist restraint can be used only in conjunction with it; or 2) a restraint that passes over the child's shoulders and between the child's legs.	Pass
	Products with a horizontal element in front of the child, e.g. a bar or a tray, shall have a crotch restraint unless the opening between the horizontal element and the seat allows the passage of the large head probe when tested in accordance with 8.9.1.2.8. This crotch restraint shall not allow the leg probe to pass from one leg opening to the other when tested in accordance with 8.9.1.2.5.2.	Pass
8.9.1.1.3	Requirements for high chairs with a passive restraint system High chairs, which are not supplied with an active restraint system, shall have a passive restraint system complying with the following requirements: a) the high chair shall be fitted with lateral protection complying with 8.9.2.3; and	N/A
	b) the high chair shall have a crotch restraint and a horizontal element, which create openings for the child's legs; and	N/A
	c) the leg openings shall not allow passage of the wedge block when tested in accordance with 8.9.1.2.5.1; and	N/A
	d) the passive crotch restraint shall not allow the leg probe to pass from one leg opening to the other when tested in accordance with 8.9.1.2.5.2; and	N/A
	e) the horizontal distance between the front surface of the backrest and the crotch restraint shall be less than 216 mm when measured in accordance with 8.9.1.2.6; and	N/A
	f) the horizontal distance between the front surface of the backrest and the horizontal member shall be less than 250 mm when measured in accordance with 8.9.1.2.7.	N/A



Unless otherwise agreed in writing, this document is issued by the Company subject to its General Conditions of Service printed overleaf, available on request or accessible at <http://www.sgs.com/en/Terms-and-Conditions.aspx> and, for electronic format documents, subject to Terms and Conditions for Electronic Documents at <http://www.sgs.com/en/Terms-and-Conditions/Terms-e-Document.aspx>. Attention is drawn to the limitation of liability, indemnification and jurisdiction issues defined therein. Any holder of this document is advised that information contained hereon reflects the Company's findings at the time of its intervention only and within the limits of Client's instructions, if any. The Company's sole responsibility is to its Client and this document does not exonerate parties to a transaction from exercising all their rights and obligations under the transaction documents. This document cannot be reproduced except in full, without prior written approval of the Company. Any unauthorized alteration, forgery or falsification of the content or appearance of this document is unlawful and offenders may be prosecuted to the fullest extent of the law. Unless otherwise stated the results shown in this test report refer only to the sample(s) tested and such sample(s) are retained for 30 days only.

Attention: To check the authenticity of testing inspection report & certificate, please contact us at telephone: (86-755) 4307 1443; or email: CN.Qoscheck@sgs.com

4th Building, No.889, Yishan Road, Xuhui District Shanghai, China 200233 1 (86) 400 960 9561 1 (86-21) 6115 6889 www.sgs.com
中国·上海·徐汇区宜山路889号4号楼 邮编: 200233 1 (86) 400 960 9561 1 (86-21) 6115 6889 sgs.china@sgs.com

Test Report

No.: SHHL1805027040GS

Date: AUG. 03, 2018

Page: 8 of 15

Clause	Test Requirements/ Items	Rating
8.9.2	Lateral protection	
8.9.2.1	General The high chair shall be fitted with lateral protection.	Pass
8.9.2.2	Lateral protection length and height for high chairs fitted with an active restraint system The lateral protection shall have a height of at least 140 mm, when measured in accordance with 8.9.2.4.1 for at least the length specified below. Openings in the lateral protection and between the lateral protection and the backrest are allowed, provided that they comply with all the relevant requirements of this standard.	Pass
	The lateral protection shall extend to at least 150 mm from the backrest, when measured in accordance with 8.9.2.4.2.	Pass
8.9.2.3	Lateral protection length and height for high chairs with a passive restraint system The lateral protections shall extend up to the horizontal component in front of the torso of the child. Openings in the lateral protection and between the lateral protection and the backrest are allowed, provided that they comply with the relevant requirements of this standard.	N/A
	The lateral protection shall have a height of at least 140 mm along the whole length when measured in accordance with 8.9.2.4.1.	N/A
8.9.3	Back rest	
	Requirements The high chair shall be fitted with a back rest with a minimum length of 250 mm measured in the upright position in accordance with 8.9.3.2.1 and wide enough to support the back of the child.	Pass
8.9.3.1	If the angle of the back rest is less than 60° from the horizontal, measured in accordance with 8.9.1.2.1, the minimum length shall be 400 mm, measured in accordance with 8.9.3.2.1.	N/A
	When tested in accordance with 8.9.3.2.2, the mechanism allowing the back rest to be adjusted, if any, shall not slip from one position to another.	N/A
8.10	Suffocation hazards Plastic sheeting used for packaging with an area greater than 100 mm x 100 mm shall conform to one of the following requirements: a) have an average sheet thickness of 0,038 mm or more; or b) be perforated with defined holes so that a minimum of 1 % of the area has been removed over any area of 30 mm x 30 mm. Plastic bags used for packaging with an opening perimeter greater than 360 mm shall not have a drawstring or cord as a means of closing. Shrink packaging that is destroyed, when the packaging is opened by the user, is excluded from these requirements.	Pass
8.11	Castors and wheels	
8.11.1	General requirements High chairs can be fitted with 2 wheels or castors.	N/A



Unless otherwise agreed in writing, this document is issued by the Company subject to its General Conditions of Service printed overleaf, available on request or accessible at <http://www.sgs.com/en/Terms-and-Conditions.aspx> and, for electronic format documents, subject to Terms and Conditions for Electronic Documents at <http://www.sgs.com/en/Terms-and-Conditions/Terms-e-Documents.aspx>. Attention is drawn to the limitation of liability, indemnification and jurisdiction issues defined therein. Any holder of this document is advised that information contained hereon reflects the Company's findings at the time of its intervention only and within the limits of Client's instructions, if any. The Company's sole responsibility is to its Client and this document does not exonerate parties to a transaction from exercising all their rights and obligations under the transaction documents. This document cannot be reproduced except in full, without prior written approval of the Company. Any unauthorized alteration, forgery or falsification of the content or appearance of this document is unlawful and offenders may be prosecuted to the fullest extent of the law. Unless otherwise stated the results shown in this test report refer only to the sample(s) tested and such sample(s) are retained for 30 days only.

Attention: To check the authenticity of testing inspection report & certificate, please contact us at telephone: (86-755) 4307 1443; or email: CN.Qoscheck@sgs.com

4th Building, No.889, Yishan Road, Xuhui District Shanghai, China 200233 1 (86) 400 960 9661 1 (86-21) 6115 6889 www.sgs.com
中国·上海·徐汇区宜山路889号4号楼 邮编: 200233 1 (86) 400 960 9661 1 (86-21) 6115 6889 sgs.china@sgs.com

Test Report

No.: SHHL1805027040GS

Date: AUG. 03, 2018

Page: 9 of 15

Clause	Test Requirements/ Items	Rating
	High chairs can be fitted with more than two castors/wheels only if the following 3 requirements are fulfilled: a) the weight of the high chair in the lightest condition of use allowed by the manufacturer's instructions shall be ≥ 7 kg when tested in accordance with 8.11.2.1; and b) the force to lift the front legs of the high chair in the lightest condition of use allowed by the manufacturer's instructions shall be ≥ 65 N when measured in accordance with 8.11.2.2; and c) at least two castors/wheels shall be lockable through a parking device which shall fulfil the requirements in 8.11.3.	N/A
8.11.3	Requirements for parking device When tested in accordance with 8.11.4.1 and 8.11.4.2, the parking device shall not break and it shall still function as intended.	N/A
	When tested in accordance with 8.11.4.3, the parking device shall prevent the castors/wheels from rolling and they shall not unlock.	N/A
8.12	Stability	
8.12.1	Requirements The requirements apply to the high chair with and without removable parts fitted, in the configurations for use allowed by the instruction.	Pass
	When tested in accordance with 8.12.2.3, 8.12.2.4, 8.12.2.5 and 8.12.2.6, the high chair shall not overturn, i.e. it shall not lose its balance and fall down.	Pass
9*	Marking and product information	Pass (See Remark 1)

Note: N/A = Not applicable

The item with * means it has been retested.

Remark:

- Where multi-lingual information was provided, only English version was verified, the correspondence to other languages was not checked.



Unless otherwise agreed in writing, this document is issued by the Company subject to its General Conditions of Service printed overleaf, available on request or accessible at <http://www.sgs.com/en/Terms-and-Conditions.aspx> and, for electronic format documents, subject to Terms and Conditions for Electronic Documents at <http://www.sgs.com/en/Terms-and-Conditions/Terms-e-Document.aspx>. Attention is drawn to the limitation of liability, indemnification and jurisdiction issues defined therein. Any holder of this document is advised that information contained hereon reflects the Company's findings at the time of its intervention only and within the limits of Client's instructions, if any. The Company's sole responsibility is to its Client and this document does not exonerate parties to a transaction from exercising all their rights and obligations under the transaction documents. This document cannot be reproduced except in full, without prior written approval of the Company. Any unauthorized alteration, forgery or falsification of the content or appearance of this document is unlawful and offenders may be prosecuted to the fullest extent of the law. Unless otherwise stated the results shown in this test report refer only to the sample(s) tested and such sample(s) are retained for 30 days only.
Attention: To check the authenticity of testing inspection report & certificate, please contact us at telephone: (86-755) 8507 1443; or email: CN.Qoscheck@sgs.com
4th Building, No.888, Yishan Road, Xuhui District Shanghai, China 200233 1 (86) 400 960 9661 1 (86-21) 6115 6899 www.sgs.com.cn
中国·上海·徐汇区宜山路888号4号楼 邮编: 200233 1 (86) 400 960 9661 1 (86-21) 6115 6899 sgs.china@sgs.com

Test Report

No.: SHHL1805027040GS

Date: AUG. 03, 2018

Page: 10 of 15

2. EK DECISION 01-16 (WITH REFERENCE TO DIN 68878:2011, CL. 6.3.2)

Clause	Test Requirements/ Items	Rating
EK 01-16	<p>Test with reference to DIN 68878:2011 cl. 6.3.2:</p> <p>Testing procedure:</p> <ul style="list-style-type: none"> - Height of the tilted chair legs: 30 mm - Testing frequency: about 10 cycles per minute - Force acting point: possibly highest position over the loaded seat <p>Testing sequence for children's high chair:</p> <ul style="list-style-type: none"> - Forwards n = 3000, loading = 25 kg - Backwards n= 3000, loading = 25 kg - Left sides n = 3000, loading = 25 kg - Right sides n = 3000, loading = 25 kg <p>Requirements:</p> <ul style="list-style-type: none"> - No loose connections, no breakages or cracks after testing. - The functionality shall not be impaired. 	Pass



Unless otherwise agreed in writing, this document is issued by the Company subject to its General Conditions of Service printed overleaf, available on request or accessible at <http://www.sgs.com/en/Terms-and-Conditions.aspx> and, for electronic format documents, subject to Terms and Conditions for Electronic Documents at <http://www.sgs.com/en/Terms-and-Conditions/Terms-e-Document.aspx>. Attention is drawn to the limitation of liability, indemnification and jurisdiction issues defined therein. Any holder of this document is advised that information contained hereon reflects the Company's findings at the time of its intervention only and within the limits of Client's instructions, if any. The Company's sole responsibility is to its Client and this document does not exonerate parties to a transaction from exercising all their rights and obligations under the transaction documents. This document cannot be reproduced except in full, without prior written approval of the Company. Any unauthorized alteration, forgery or falsification of the content or appearance of this document is unlawful and offenders may be prosecuted to the fullest extent of the law. Unless otherwise stated the results shown in this test report refer only to the sample(s) tested and such sample(s) are retained for 30 days only.

Attention: To check the authenticity of testing inspection report & certificate, please contact us at telephone: (86-755) 8507 1443; or email: CN.Qoscheck@sgs.com

4th Building, No 888, Yishan Road, Xuhui District Shanghai, China 200233 1 (86) 400 960 9661 1 (86-21) 6115 6899 www.sgsgroup.com.cn
 中国·上海·徐汇区宜山路888号4号楼 邮编: 200233 1 (86) 400 960 9661 1 (86-21) 6115 6899 e_sgs.china@sgs.com



Test Report

No.: SHHL1805027040GS

Date: AUG. 03, 2018

Page: 11 of 15

Chemical Test Result:

Test Part Description:

Specimen No.	SGS Sample ID	Description
SN1	SHA18-121404.001	Brown coating
SN2	SHA18-121404.002	Dark brown coating
SN3	SHA18-121404.006	White coating

Remarks:

- (1) 1 mg/kg = 0.0001%
- (2) MDL = Method Detection Limit
- (3) ND = Not Detected (< MDL)
- (4) "-" = Not Regulated

European Directive (EU) 2017/738 amending 2009/48/EC-Migration of certain elements (Category III:for scrapped-off toy material)(As requested by client)

Test Method: With reference to EN71-3:2013+A1:2014, analysis was performed by ICP-OES.

Test Item(s)	Limit	Unit	MDL	001	002	006
Soluble Chromium (VI) (Cr VI)	0.2	mg/kg	0.18	ND	ND	ND
Soluble Lead (Pb)	160	mg/kg	5	ND	ND	ND
Soluble Antimony (Sb)	560	mg/kg	10	ND	ND	ND
Soluble Arsenic (As)	47	mg/kg	10	ND	ND	ND
Soluble Barium (Ba)	18750	mg/kg	50	ND	ND	ND
Soluble Cadmium (Cd)	17	mg/kg	5	ND	ND	ND
Soluble Chromium (III) (Cr III)	460	mg/kg	5	ND	ND	ND
Soluble Mercury (Hg)	94	mg/kg	10	ND	ND	ND
Soluble Selenium (Se)	460	mg/kg	10	ND	ND	ND
Soluble Boron (B)	15000	mg/kg	50	ND	ND	ND
Soluble Cobalt (Co)	130	mg/kg	10	ND	ND	ND
Soluble Manganese (Mn)	15000	mg/kg	50	ND	ND	ND
Soluble Strontium (Sr)	56000	mg/kg	50	78	ND	ND
Soluble Zinc (Zn)	46000	mg/kg	50	829	1184	749
Soluble Copper (Cu)	7700	mg/kg	50	ND	ND	ND
Soluble Aluminum (Al)	70000	mg/kg	50	ND	ND	206
Soluble Nickel (Ni)	930	mg/kg	10	ND	ND	ND



Unless otherwise agreed in writing, this document is issued by the Company subject to its General Conditions of Service printed overleaf, available on request or accessible at <http://www.sgs.com/en/Terms-and-Conditions.aspx> and, for electronic format documents, subject to Terms and Conditions for Electronic Documents at <http://www.sgs.com/en/Terms-and-Conditions/Terms-e-Document.aspx>. Attention is drawn to the limitation of liability, indemnification and jurisdiction issues defined therein. Any holder of this document is advised that information contained hereon reflects the Company's findings at the time of its intervention only and within the limits of Client's instructions, if any. The Company's sole responsibility is to its Client and this document does not exonerate parties to a transaction from exercising all their rights and obligations under the transaction documents. This document cannot be reproduced except in full, without prior written approval of the Company. Any unauthorized alteration, forgery or falsification of the content or appearance of this document is unlawful and offenders may be prosecuted to the fullest extent of the law. Unless otherwise stated the results shown in this test report refer only to the sample(s) tested and such sample(s) are retained for 30 days only.

Attention: To check the authenticity of testing inspection report & certificate, please contact us at telephone: (86-755) 8507 1443; or email: CN.Qoscheck@sgs.com

4th Building, No.889, Yishan Road, Xuhui District Shanghai, China 200233 1 (86) 400 960 9661 1 (86-21) 6115 6889 www.sgsgroup.com.cn
中国·上海·徐汇区宜山路889号4号楼 邮编: 200233 1 (86) 400 960 9661 1 (86-21) 6115 6889 e_sgs.china@sgs.com

Test Report

No.: SHHL1805027040GS

Date: AUG. 03, 2018

Page: 12 of 15

Test Item(s)	Limit	Unit	MDL	001	002	006
Soluble Tin (Sn)	180000	mg/kg	4.9	ND	ND	ND
Soluble Organic Tin*	12	mg/kg	-	ND	ND	ND
Conclusion				PASS	PASS	PASS

Notes:

(1) Confirmation test of soluble chromium (III) & chromium (VI) is not required in case of soluble chromium does not exceed their requirements as specified in EN71-3:2013+A1:2014.

(2) *Confirmation test of soluble organic tin is not required in case of soluble tin, after conversion, does not exceed the soluble organic tin requirement as specified in EN71-3:2013+A1:2014

Sample photo:



SHAHG1812140401



Unless otherwise agreed in writing, this document is issued by the Company subject to its General Conditions of Service printed overleaf, available on request or accessible at <http://www.sgs.com/en/Terms-and-Conditions.aspx> and, for electronic format documents, subject to Terms and Conditions for Electronic Documents at <http://www.sgs.com/en/Terms-and-Conditions/Terms-e-Document.aspx>. Attention is drawn to the limitation of liability, indemnification and jurisdiction issues defined therein. Any holder of this document is advised that information contained hereon reflects the Company's findings at the time of its intervention only and within the limits of Client's instructions, if any. The Company's sole responsibility is to its Client and this document does not exonerate parties to a transaction from exercising all their rights and obligations under the transaction documents. This document cannot be reproduced except in full, without prior written approval of the Company. Any unauthorized alteration, forgery or falsification of the content or appearance of this document is unlawful and offenders may be prosecuted to the fullest extent of the law. Unless otherwise stated the results shown in this test report refer only to the sample(s) tested and such sample(s) are retained for 30 days only.

Attention: To check the authenticity of testing inspection report & certificate, please contact us at telephone: (86-755) 8507 1443; or email: CN.Qoscheck@sgs.com

4th Building, No. 888, Yishan Road, Xuhui District Shanghai, China 200233 1 (86) 400 960 9661 1 (86-21) 6115 6899 www.sgsgroup.com.cn
 中国·上海·徐汇区宜山路888号4号楼 邮编: 200233 1 (86) 400 960 9661 1 (86-21) 6115 6899 sgs.china@sgs.com

Test Report

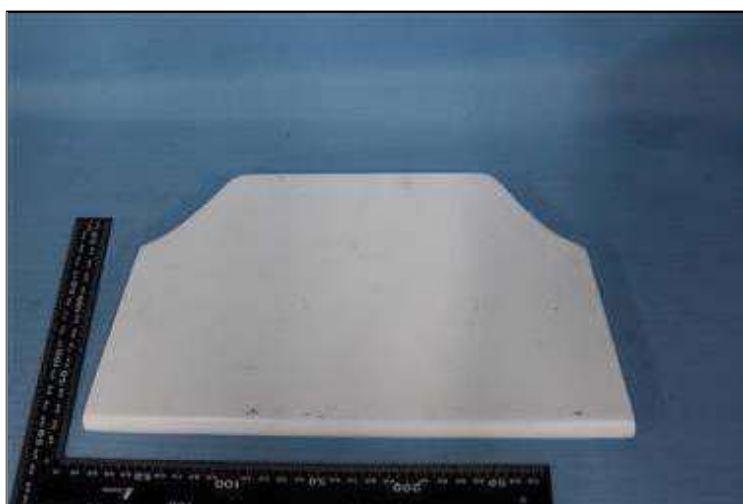
No.: SHHL1805027040GS

Date: AUG. 03, 2018

Page: 13 of 15



SHAHG1812140401



SHAHG1812140401

SGS authenticate the photo on original report only



Unless otherwise agreed in writing, this document is issued by the Company subject to its General Conditions of Service printed overleaf, available on request or accessible at <http://www.sgs.com/en/Terms-and-Conditions.aspx> and, for electronic format documents, subject to Terms and Conditions for Electronic Documents at <http://www.sgs.com/en/Terms-and-Conditions/Terms-e-Document.aspx>. Attention is drawn to the limitation of liability, indemnification and jurisdiction issues defined therein. Any holder of this document is advised that information contained hereon reflects the Company's findings at the time of its intervention only and within the limits of Client's Instructions, if any. The Company's sole responsibility is to its Client and this document does not exonerate parties to a transaction from exercising all their rights and obligations under the transaction documents. This document cannot be reproduced except in full, without prior written approval of the Company. Any unauthorized alteration, forgery or falsification of the content or appearance of this document is unlawful and offenders may be prosecuted to the fullest extent of the law. Unless otherwise stated the results shown in this test report refer only to the sample(s) tested and such sample(s) are retained for 30 days only.

Attention: To check the authenticity of testing inspection report & certificate, please contact us at telephone: (86-755) 8507 1443; or email: CN.Qoscheck@sgs.com

4th Building, No. 888, Yishan Road, Xuhui District Shanghai, China 200233 1 (86) 400 960 9661 1 (86-21) 6115 6899 www.sgsgroup.com.cn
 中国·上海·徐汇区宜山路888号4号楼 邮编: 200233 1 (86) 400 960 9661 1 (86-21) 6115 6899 e_sgs.china@sgs.com

Test Report

No.: SHHL1805027040GS

Date: AUG. 03, 2018

Page: 14 of 15

Sample Photo:

Test Sample A- Front View



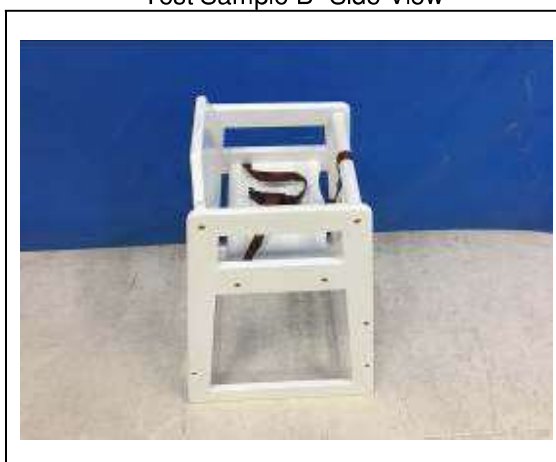
Test Sample A- Side View



Test Sample B- Front View



Test Sample B- Side View



Unless otherwise agreed in writing, this document is issued by the Company subject to its General Conditions of Service printed overleaf, available on request or accessible at <http://www.sgs.com/en/Terms-and-Conditions.aspx> and, for electronic format documents, subject to Terms and Conditions for Electronic Documents at <http://www.sgs.com/en/Terms-and-Conditions/Terms-e-Document.aspx>. Attention is drawn to the limitation of liability, indemnification and jurisdiction issues defined therein. Any holder of this document is advised that information contained hereon reflects the Company's findings at the time of its intervention only and within the limits of Client's instructions, if any. The Company's sole responsibility is to its Client and this document does not exonerate parties to a transaction from exercising all their rights and obligations under the transaction documents. This document cannot be reproduced except in full, without prior written approval of the Company. Any unauthorized alteration, forgery or falsification of the content or appearance of this document is unlawful and offenders may be prosecuted to the fullest extent of the law. Unless otherwise stated the results shown in this test report refer only to the sample(s) tested and such sample(s) are retained for 30 days only.

Attention: To check the authenticity of testing inspection report & certificate, please contact us at telephone: (86-755) 8507 1443; or email: CN.Qoscheck@sgs.com

4th Building, No 888, Yishan Road, Xuhui District Shanghai, China 200233 1 (86) 400 960 9661 1 (86-21) 6115 6899 www.sgs.com.cn
 中国·上海·徐汇区宜山路888号4号楼 邮编: 200233 1 (86) 400 960 9661 1 (86-21) 6115 6899 sgs.china@sgs.com

Test Report

No.: SHHL1805027040GS

Date: AUG. 03, 2018

Page: 15 of 15

Test Sample C- Front View



Test Sample C- Side View



SGS authenticate the photo on original report only

End of Report



Unless otherwise agreed in writing, this document is issued by the Company subject to its General Conditions of Service printed overleaf, available on request or accessible at <http://www.sgs.com/en/Terms-and-Conditions.aspx> and, for electronic format documents, subject to Terms and Conditions for Electronic Documents at <http://www.sgs.com/en/Terms-and-Conditions/Terms-e-Document.aspx>. Attention is drawn to the limitation of liability, indemnification and jurisdiction issues defined therein. Any holder of this document is advised that information contained hereon reflects the Company's findings at the time of its intervention only and within the limits of Client's instructions, if any. The Company's sole responsibility is to its Client and this document does not exonerate parties to a transaction from exercising all their rights and obligations under the transaction documents. This document cannot be reproduced except in full, without prior written approval of the Company. Any unauthorized alteration, forgery or falsification of the content or appearance of this document is unlawful and offenders may be prosecuted to the fullest extent of the law. Unless otherwise stated the results shown in this test report refer only to the sample(s) tested and such sample(s) are retained for 30 days only.

Attention: To check the authenticity of testing inspection report & certificate, please contact us at telephone: (86-755) 8507 1443; or email: CN.Qoscheck@sgs.com

4th Building, No 888, Yishan Road, Xuhui District Shanghai, China 200233 1 (86) 400 960 9661 1 (86-21) 6115 6899 www.sgsgroup.com.cn
 中国·上海·徐汇区宜山路888号4号楼 邮编: 200233 1 (86) 400 960 9661 1 (86-21) 6115 6899 e_sgs.china@sgs.com