



i91105C Four Zone Induction / Fan-Assisted Oven Range



Short Form Specification

Unit to be Falcon F900 Series induction range with a counter top having 4 x 5kW cooking zones. A 2/1 gastronorm compatible convection oven will be located below. Unit to be supplied upon adjustable feet or upon optional castors.

The hob will be constructed from 6mm toughened ceramic glass and 2mm 304 grade stainless steel. Hobs will be laser cut with right-angled edges to allow joining of units with no gaps between hobs. Exterior panels are Scotch Brite finish stainless steel. Control knobs to be marked showing variable settings and to have a bezel behind each knob to prevent water ingress. The unit will have IPX 5 water resistance certification.

Key Features

- 4 x 5kW energy efficient heat zones
- Sealed 6mm toughened glass hob
- In-built pan detection - no wasted energy
- Low heat emission
- Variable control settings
- 2/1 GN oven with side-mounted runners
- 5 shelf positions, 2 shelves supplied
- 80 - 280°C oven temperature range
- IPX 5 water resistance certification
- Supplied upon adjustable stainless steel feet
- 2mm thick 304 grade stainless steel hob
- Laser cut hob allows edge to edge joining of units
- Stainless steel external panels with Scotch Brite finish
- Dynamic Link System Compatible



Integrated linking system allows quick and easy installation to create a continuous cookline.

Patent pending, application no. GB 1511389.7

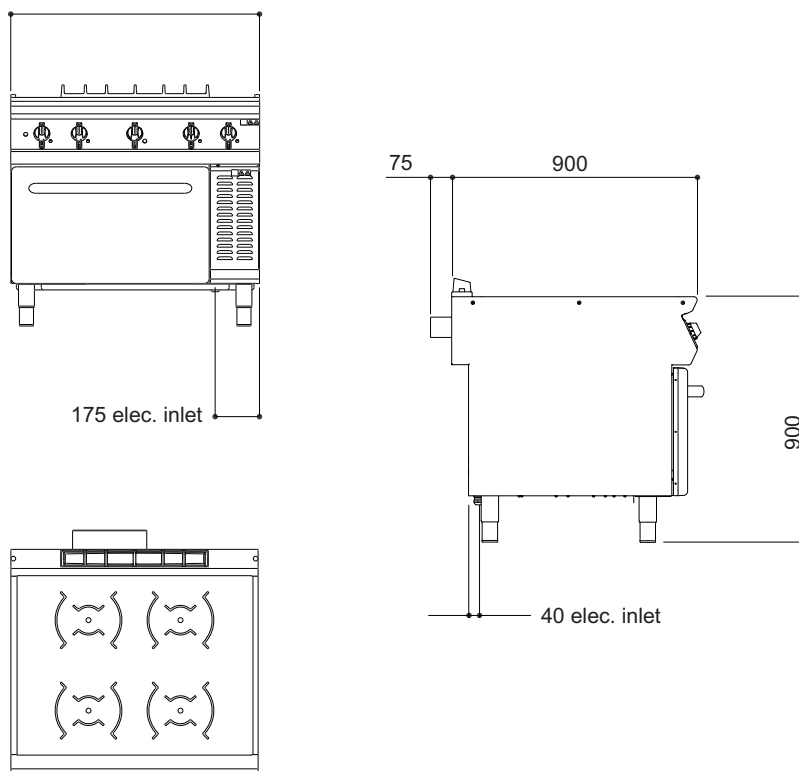
Optional Accessories

- Front hob rail
- Side cover panel
- Kick plate
- Castors



i91105C Four Zone Induction / Fan-Assisted Oven Range

Model Dimensions (mm)



Specification Details

| | |
|--------------------------------|--------------------------------|
| Electrical rating (kW) | 26.5 |
| Electrical supply voltage (V) | 400V 3N~ |
| Required electrical supply (A) | 63 |
| Electrical current split (A) | L1: 38.3 / L2: 38.4 / L3: 38.4 |
| Zone rating (kW) | 4 x 5 |
| Oven element rating (kW) | 6.4 |
| Gastronorm compatibility | 2/1 |
| Weight (kg) | 141 |
| Packed weight (kg) | 164 |
| Packed dimensions (mm) | 1200 (w) x 1000 (d) x 1110 (h) |

Installation Note:

Please consult local legislation with regard to installation of cooking equipment.