

# *Bento Dinner Plates*

for the *Post-Covid* World  
by MyGlassStudio



# Message To Our Customers

Delight Your First Guests - Rejuvenate Travel

## What we see

For 20 years we serve the food service industry. We have been here when the fine dining boomed, here when the Towers fell, here when the crash happened, here when the hospitality sector growth boom took place. Nothing compares..

Covid-19 is a catalyst for change especially within our industry. It disrupts the fundamental values of hospitality: “the friendly and generous reception and entertainment of guests and strangers”. In Greece, we call it “filoxenia” and it has a bit stronger meaning than the word hospitality: it means “the love for strangers”. It was such an important value that the abuse of filoxenia was the starting point of the greatest war in ancient times: the Trojan War.

Today, disruption on a fundamental scale is happening. We cannot gather and we do not trust strangers. Nevertheless, travel is in the human DNA. It has been there for millennia, it is stronger than the virus. As Homo Sapiens, we will adapt and survive.

## Where we are


Despite the challenges that our clients face in many parts of the world, MyGlassStudio team is established in more or less Covid safe countries. The factory never seized to operate. We have a vertical production and we do not depend on outsourcing. Our sales teams have been working remotely a long time before the crisis. In this sense, operationally the crisis found us prepared. Our loyal family of people is striving to excellence even during these unprecedented times and this is cherished by both of us. As a company, we are big enough to serve our clients and small enough to adapt to specific environments.... and we listen, learn, un-learn and re-learn.

## Where we are going

“Defeat Covid-19” is our new tagline underneath our logo, the Bull. It will stay there until this battle for the survival of the hospitality sector (that we so much love), is won. Our main weapon is creativity. As lockdowns ease, new opportunities arise to design solutions that deliver positive experiences. We work to help you “Delight your Guests” through the **sense of safety** and a **new creative optimism**. The catalog you are holding is not about a “hospital look” of perspex, masks and chlorine bleach. It is about designing a new travel and entertainment experience with products inspired by this new reality. This is the 1st version. New versions will be available as soon as we develop new products.

Hospitality always depended on collaborations. At MyGlassStudio, we listened to you, we experimented and we delivered. Although a small company, in many instances we have led the industry into new ventures. This is what we want to do now. We want to listen and deliver. We would love to hear from you, work with you and to support you exploring the Post-Covid-19 World. As Marriott International so lovingly puts it: “We will Travel Again.”

Stay Safe. Stay Healthy  
Anna and Vasily



## Bento Dinner Plates Needed Now - Used Forever

### Bento Dinner Plates

A dinner set  
in the form of a bento box

### Four Basics

Covered Dinner Plates  
Super-Hygienic Material  
Versatility in Hotel Operations  
Needed Now - Used Forever

### One Idea

Reopen with Safety  
Reopen in Style  
Re-build Trust  
Defeat Covid-19

Code: S5-S6-04-RHZ026021, Small Rectangular Bento Dinner Plate



## *Contactless Dining to Delight First Guests*

### Meal Guarded... Meal Enjoyed...

Just like the West taught the East how to serve food on a round open plate, the East can teach the West how to serve food in a box.

As opposed to the open dinner plate, the Bento Dinner Plate is a container that **guards food** and **provides protection** from infected air droplets that might linger in corridors and elevators.

It provides the **sense of safety** and **peace of mind** that post Covid restaurant guests **do** value without compromising the sense of luxury and extraordinariness, without disappointing them, without asking them to lower their expectations. It's about a "Stay Safe Look" not a "Hospital Look".

Delight your "first guests" through the sense of Safety and Creativity. They, in turn, will encourage those that are more Covid - anxious to return back to restaurants faster.

#### Product Specifications

Nonporous Surface - Hygienic Material - Glass

Chlorine Bleach Resistant

Leakproof

Totally Stackable (Covers & Plates)

Dishwasher Safe

Heated to 120C

The only Wipe-able Dinner Plate!

Food Safe - Lead and Cadmium Free

Resistant to Citric Acids

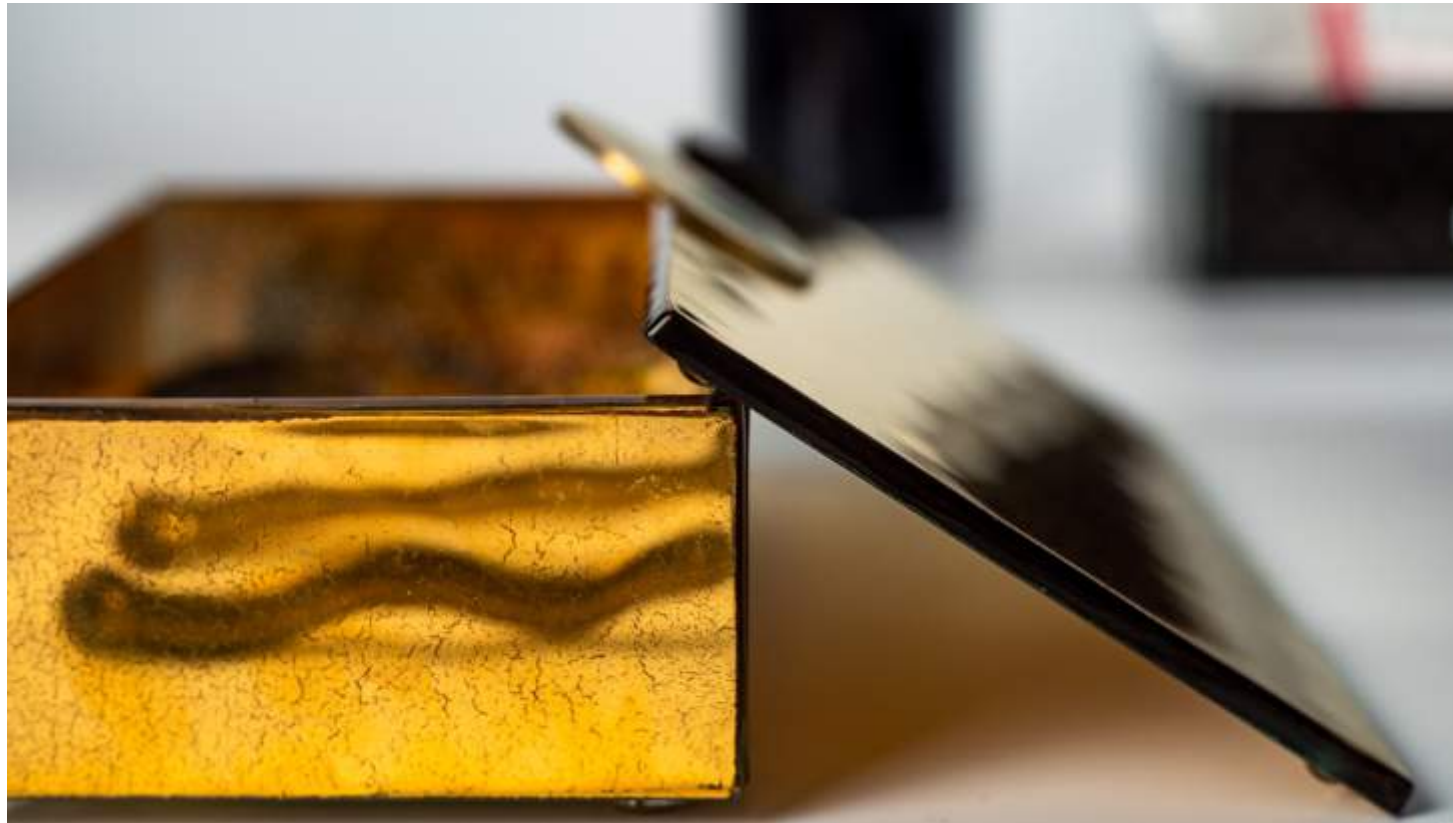
Freezer Safe (-20C)

Ultra-Durable - Anti-Chipping Guarantee

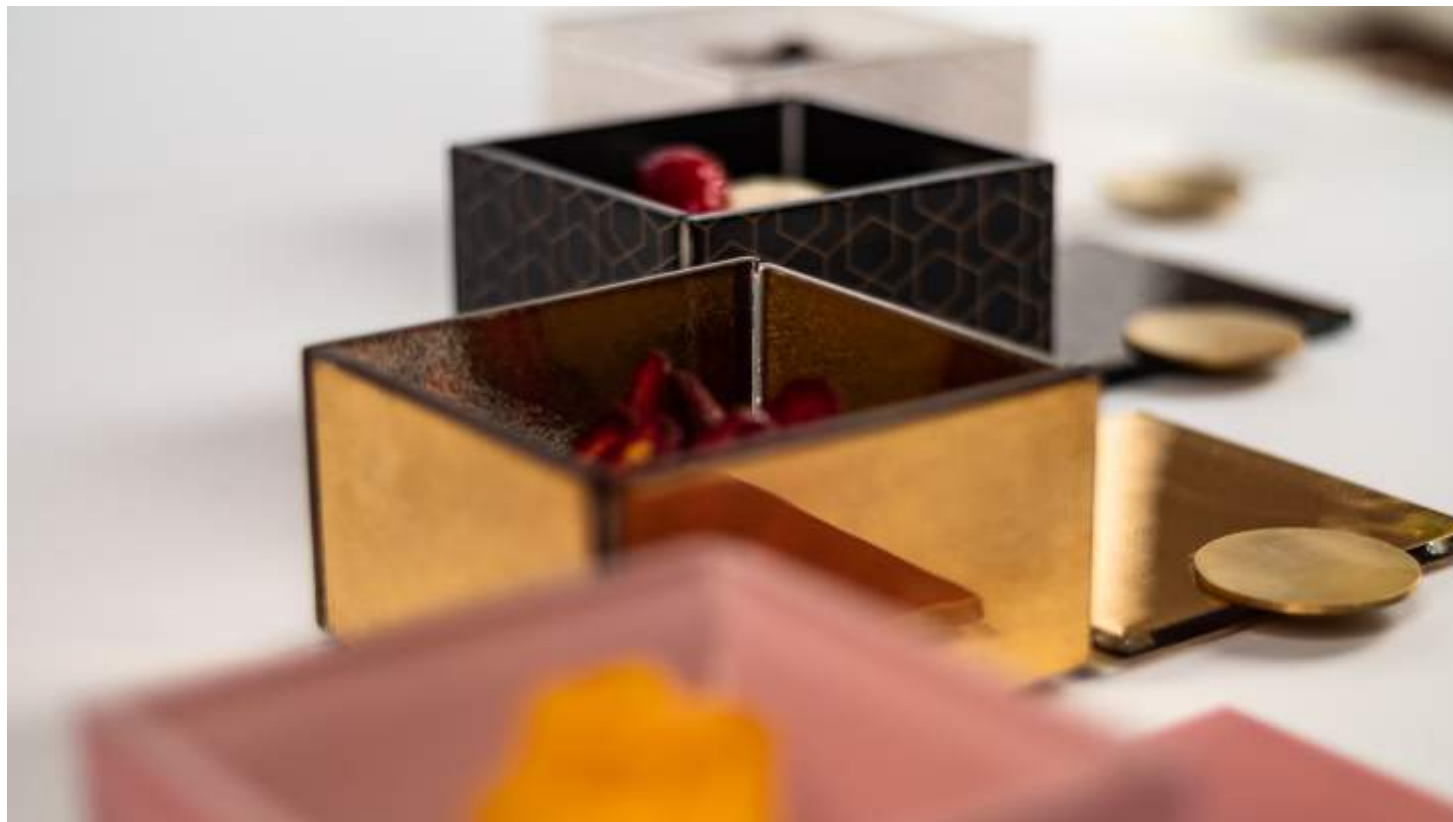
Code: S5-S6-04-SS3843. Small Rectangular Bento Dinner Plate, red inner side - black outer side



# Is Your Food Service *Foodstagrammable*?



Code: S5-S6-04-SR21, Small Rectangular Bento Dinner Plate, Gold Plated



Code: S5-S6-03-SR21, Small Square Bento Dinner Plate in 4 colors

## In-Room *Fine* Dining

IRD is our Chance to Re-build Trust. Do it *Fine*!  
Have us Travel Again.

In contrast to disposable delivery packaging made of plastic or cardboard, the Bento Dinner Plate *infuses "Fine Dining" into "In-Room Dining"*. It will not disappoint guests who expect both Luxury and Safety, but get only Safety.

Compared to traditional room service metal covers which are associated with "old style" hospitality service, the Bento Dinner Plate is etiquette in 5-star quality infused with modern sensitivity. A truly modern "service under the bell" experience..

Since IRD will be the main F&B revenue driver of the hotels in the near future, *a WOW experience is absolutely essential*.

A Foodstagrammable "lunch box" presentation of In-Room Dining will surprise post-Covid age "Explorers". They will "See and Feel Safety". They will post it on Social. They will encourage others and will help boost travel.

The Bento Dinner Plate: A new canvas for new plating trends. A new vision of the covered dinner plate.

Knock & Drop Room Service Delivery  
*the Luxe Way*



# Hygienic-Chic Glass Bento Dinner Plates

In Food Service, the Perception of Safety, begins with the Material

Glass is absolutely non-porous. Its is no only easily sanitized, but it is also perceived by guests as “clean”. In general, it is the most hygienic material that can be used in food service. Materials with porous surfaces (such as wood, slate or unglazed ceramics), are hard or next to impossible to disinfect. MyGlassStudio bento dinner plates are also Chlorine Bleach resistant (EPA approved disinfectant) and it wont decolorize our glazes as it happens in low fired glazes.

Rough Ceramics such as earthenware or stoneware, have uneven and porous surfaces which are hard to deep clean and sanitize, especially unglazed or matte glazed ceramics.

Melamine, is not resistant to Chlorine Bleach disinfectants.

Lacquerware and wood are impossible to dishwash and are not resistant to Chlorine Bleach. Wood is also extremely porous.

Plastic or acrylic lunch boxes (such as Tupperware) are hygienic but plastic can hardly give a sense of luxury and elegance.

Porcelain, when chipped, it reveals the rough, unglazed clay body. Although inappropriate, it was common practice to use chipped dishes in food service. In the post-Covid world however, serving with chipped porcelain will be considered “Unsafe” by guests.

Shrink Wrap is good to protect food in room service... but not our Oceans.



Code: S5-S6-04-X40, Small Rectangular Bento Dinner Plate

	Glass	Rough Ceramics *	Porcelain	Melamine **	Lacquerware	Plastics	Wood
Nonporous Surface (Porous surfaces are hard or impossible to disinfect)	yes	no	yes	no	yes	yes	no
Chlorine Bleach Resistant (EPA Approved Disinfectants)	yes	no	no (decolorizes glazes)	no	no	yes	no
Dishwasher Safe	yes	yes	yes	yes	no	yes	no
Eco Friendly	yes	yes	yes	no	yes	no	yes

\* Earthenware/Stoneware (Unglazed & matte glaze ceramics)

\*\* Rustic Style Melamine

# The *Bento* Dinner Plate Color Collection

## 7 Colors to Mix & Match

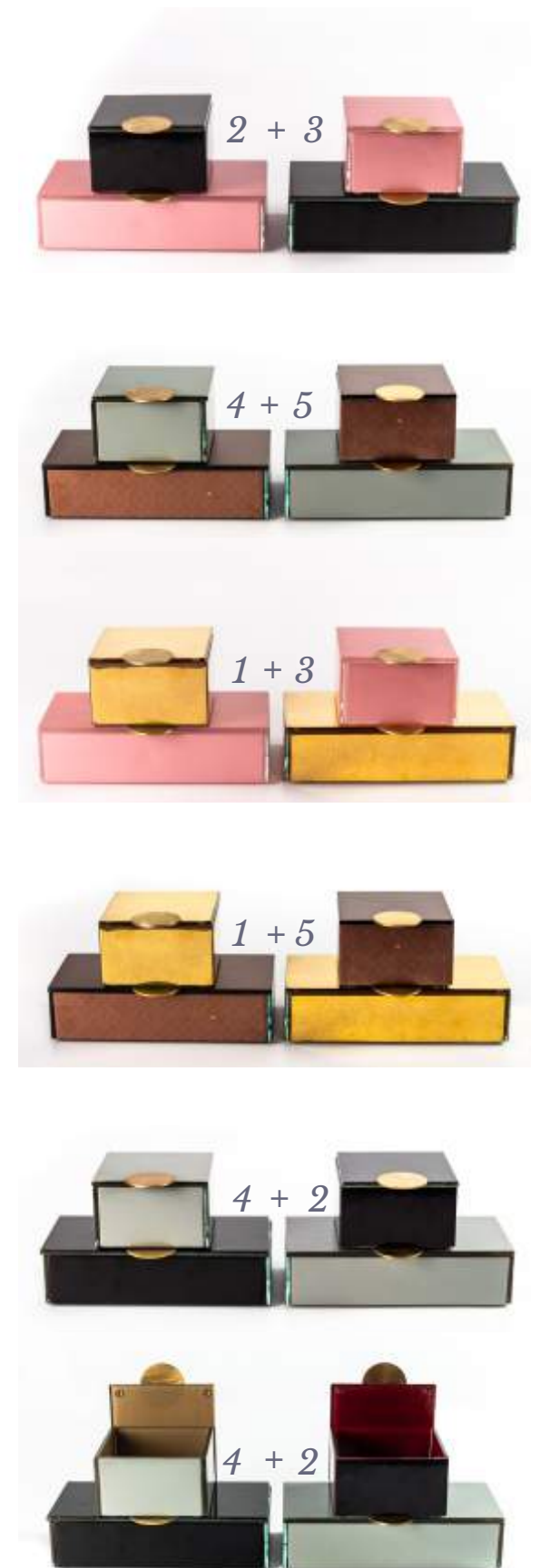
1. Precious Liquid Gold
2. Liquorise Black (with Chinese Red inner side)
3. Metallic Dark Salmon Pink (with white inner side)
4. Metallic Artichoke Gray (with dusty gold inner side)
5. Metallic Tobacco Brown (with gold Art Deco Pattern)
6. White with gold Art Deco Pattern
7. Black with gold Art Deco Pattern



### Coming Soon

Transparent Clear Glass  
White Crackling Pattern  
Light Niagra Blue Crackled Pattern

Covers, with solid brass handle





*The Bento Dinner Plate Collection*





# The *Bento* Dinner Plate Collection

## 2 Bento Dinner Plate Pairs

### Small Pair



Small Square Plate with Cover

Dimensions: 11x11cm/4.3x4.3in  
Height: 6.5cm/2.6in  
Capacity: 550ml/18.6oz  
Code: S5-S6-03



Small Rectangular Plate with Cover

Dimensions: 22x11cm/8.7x4.3in  
Height: 5.5cm/2.2in  
Capacity: 945ml/32oz  
Code: S5-S6-04

### Large Pair



Large Square Plate with Cover

Dimensions: 14x14cm/5.5x5.5in  
Height: 6cm/2.4in  
Capacity: 770ml/26oz  
Code: S5-S6-01



Large Rectangular Plate with Cover

Dimensions: 28x14cm/11x5.5in  
Height: 6cm/2.4in  
Capacity: 1.750ml/59.2oz  
Code: S5-S6-02



Long Rectangle Plate with Cover

Dimensions: 28x7cm/11x2.8in  
Height: 4cm/1.6in  
Capacity: 480ml/16oz  
Code: SC-17-16

## Tier Display - Multiple Stacking Options

### Small Pair



**2 Tiers**  
2 Rectangular  
1 Rectangular cover



**3 Tiers**  
3 Rectangular  
1 Rectangular cover



**2 Tiers**  
1 Rectangular  
2 Square  
2 Square covers

**2 Tiers**  
1 Rectangular  
2 Square  
1 Rectangular cover

**3 Tiers**  
2 Rectangular  
2 Square  
2 Square covers

**3 Tiers**  
2 Rectangular  
2 Square  
1 Rectangular cover

### Large Pair



**2 Tiers**  
2 Rectangular  
1 Rectangular cover



**2 Tiers**  
1 Rectangular  
2 Square  
1 Rectangular cover



**2 Tiers**  
1 Rectangular  
2 Square  
2 Square covers



# The *Bento* Dinner Plate Collection

## A New Canvas for New Plating Trends



Small square plate 11x11cm  
Miso Soup



Small rectangular plate 22x11cm  
Salad with tomato and cheese



Small rectangular plate 22x11cm  
Salmon trout filet with strawberries



Large square plate 14x14cm  
Nigiri set in 3 tiers



Small rectangular plate 22x11cm  
Duck liver creme brulee



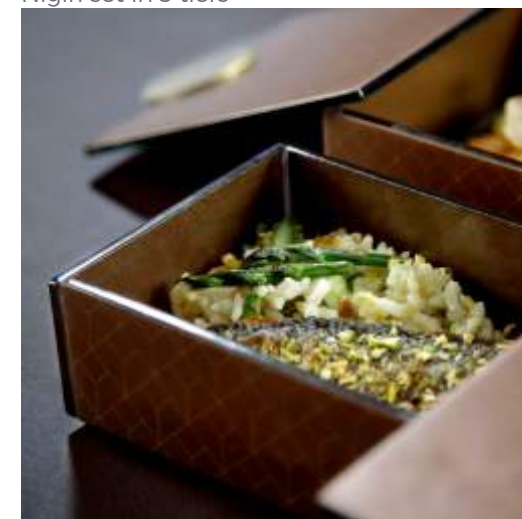
Small square plate 11x11cm  
Miso Soup and a portion of rice



Large square plate 14x14cm  
Ravioli with frog legs and Einkorn risotto



Large square plate 14x14cm  
Tempura Ebi



Small rectangular plate 22x11cm  
Sea bass fillet with rice



Large square plate 14x14cm  
Appetizer shrimp with corn sauce



Long rectangle appetizer plate 28x7cm  
Octopus with baby vegetables



Small rectangular plate 22x11cm  
Yogurt cake with almond marzipan



Small rectangular plate 22x11cm  
Spaghetti allo scoglio



Large rectangular plate 28x14cm  
Mediterranean mussels



Small square plate 11x11cm  
Gazpacho



# The *Bento* Dinner Plate Collection

## Small Pair

### Small Square Plate / Soup Bowl

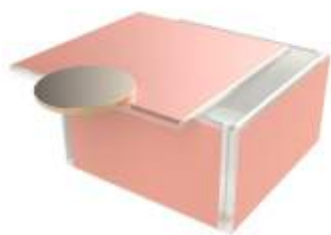
11x11cm / 4.3x4.3in, Height: 6,5cm / 2.5in, Capacity: 550ml / 19oz

The small square plate is perfect to serve soups, side dishes such as market vegetables, side green salad, mashed potatoes and classic french fries. Due to its depth, you can present a bread bun to accompany a salad or a soup. The small square plate is also ideal for serving desserts such as brownies, cookies, selection of ice cream or seasonal fruits. You can stack two square bentos next to each other on top of the rectangular one. In this way, you can present stir fried vegetables in the large one and have the rice and salad in the small square ones. For the bar lounge, it is great for snacks.

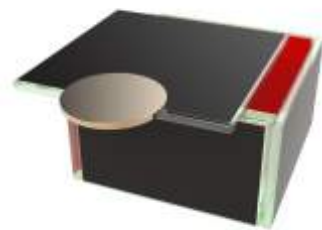
### Small Rectangular Plate

22x11cm / 8.7x4.3in, Height: 5,5cm / 2.7in, Capacity: 945ml / 32oz

The perfect size for a pasta portion, small club sandwich, veggie wraps or Pad Thai. Serve cavatelli or spaghetti and enclose the meal in a protected box that will be delivered to your guest "touchless". Your guests will for sure appreciate the innovation! The small rectangular bento dinner plate is ideal for breakfast served in the room: Tier two boxes (one with pancakes and one with eggs with bacon). You have it: a bento box that is a joy to use and encourages an order of consumption. In bars and lounges this is the perfect large appetizer plate to serve tempura and finger food in general. With its cover it also very useful as a lunch box for meeting rooms and board rooms for a light lunch.



S5-S6-03-SS4220370



S5-S6-03-SS3843



S5-S6-03-SS02910450



S5-S6-04-SS4220370



S5-S6-04-SS3843



S5-S6-04-SS02910450



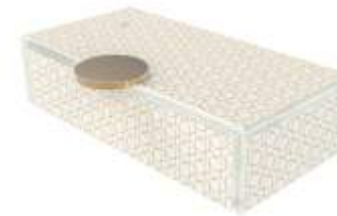
S5-S6-03-RHZ422021



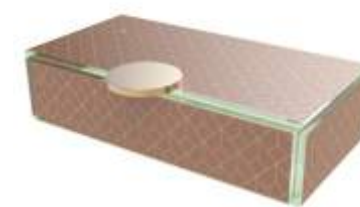
S5-S6-03-DMZ026021



S5-S6-03-RHZ43021



S5-S6-04-RHZ422021



S5-S6-04-DMZ026021



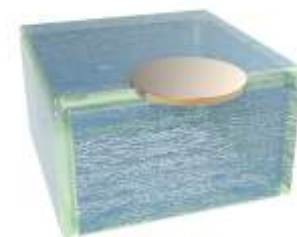
S5-S6-04-RHZ43021



S5-S6-03-CR422



S5-S6-03-X40



S5-S6-03-CR123



S5-S6-04-CR422



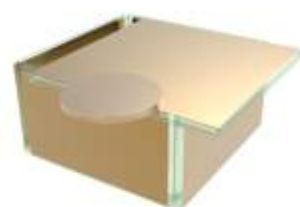
S5-S6-04-X40



S5-S6-04-CR123



S5-S6-03-SR422



S5-S6-03-SR21



S5-S6-04-SR422



S5-S6-04-SR21

# The *Bento* Dinner Plate Collection

## Large Pair

### Large Square Plate

14x14cm / 5.5x5.5in, Height: 6cm / 2.4in, Capacity: 770ml / 26oz

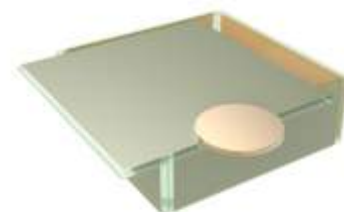
The Bento Appetizer or Dessert Plate can be used to serve small salads, risotto, starters, desserts, soups seasonal vegetable minestrone), sides (a portion of french fries) and other appetizers such as arancini or spring rolls in a plate that will protect the meal, without compromising on the eating experience! Actually it enhances it! As a welcome amenity, surprise your guests with a delicious food amenity, guarded inside the cover (can also use shrink wrap under the cover). It is also the perfect size for kids' meals such as pasta or fish fingers.



S5-S6-01-SS4220370



S5-S6-01-SS3843



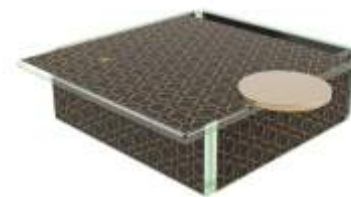
S5-S6-01-SS02910450



S5-S6-01-RHZ422021



S5-S6-01-DMZ026021



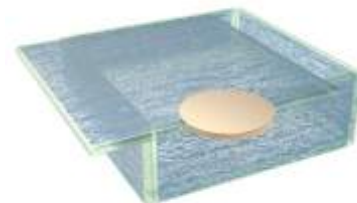
S5-S6-01-RHZ43021



S5-S6-01-CR422



S5-S6-01-X40



S5-S6-01-CR123



S5-S6-01-SR422



S5-S6-01-SR21



S5-S6-02-SS4220370



S5-S6-02-SS3843



S5-S6-02-SS02910450



S5-S6-02-RHZ422021



S5-S6-02-DMZ026021



S5-S6-02-RHZ43021



S5-S6-02-CR422



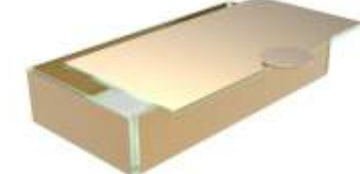
S5-S6-02-X40



S5-S6-02-CR123



S5-S6-02-SR422



S5-S6-02-SR21



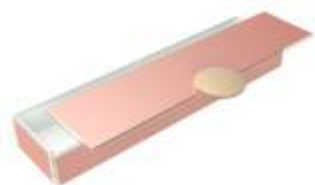
# The *Bento* Dinner Plate Collection

## Large Pair

### Long Rectangle Appetizer Plate / Cutlery Case

28x7cm / 11x2.8in, Height: 4cm / 1.6in, Capacity: 480ml / 16oz

This versatile appetizer plate is great for small food bites and long appetizers such as an octopus dish, spring rolls or side greens and can be stacked on top of the large rectangular bento main course plate. This plate is also useful as a cutlery case and a dipping bowl tray.  
Code: SC-17-16



SC-17-16-SS4220370



SC-17-16-SS3843



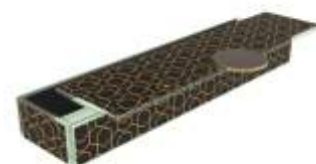
SC-17-16-SS02910450



SC-17-16-RHZ422021



SC-17-16-DMZ026021



SC-17-16-RHZ43021



SC-17-16-CR422



SC-17-16-X40



SC-17-16-CR123



SC-17-16-SR422



SC-17-16-SR21



Code: SC-17-16-SS3843



Code: SC-17-16-SS3843



## Tabletop Accessories

Napkin Ring | Cutlery/Chopstick Rests | Dip Bowl Set | Salt & Pepper Holder

Cutlery case is the long rectangle bento dinner plate in which a variety of accessories can be added. You can transform it into a condiment tray/dip bowl set or a cutlery case.

To create the dip bowl set, place 4 mini small dipping bowls with their individual condiment spoons.

To create a cutlery case, place the salt & pepper holder at one end together with the cutlery rests. Use the napkin ring to envelope the silverware set, the napkin and the salt spoon. The guest can then place a fork and the knife on the table resting on the cutlery rests.



Color: DMZ026021



Color: DMZ026021



Color: SR21



Color: SS3843



Color: SS4220370



Color: RHZ43021





## Tabletop Accessories

### Napkin Ring and Cutlery / Chopstick Rests

#### Napkin Ring

6x2,5cm / 2,4x1in, Height: 3.1cm / 1.2in

A napkin ring with 2 round handmade glass beads and metal ring. Envelope napkin, cutlery set or chopsticks as well as the salt tasting spoon and offer them together inside the cutlery case.

Code: SC-00-10



SC-00-10-X40-BK  
Black



SC-00-10-X40-W  
White



SC-00-10-X40-G  
Gold

#### Cutlery / Chopstick Rests

6x2,6cm / 2,4x1in, Height: 1 cm/0.4in

A chopstick or cutlery rest for fine dining table setting. It can be placed inside the cutlery case along with the napkin ring, cutlery set and napkin. Guests can place them on the table on their own together with flatware.

Code: SC-17-13



SC-17-13-SR43  
Black



SC-17-13-SR026  
Brown



SC-17-13-SR0450  
Gray



SC-17-13-SR422  
Pure White



SC-17-13-X40  
Transparent



SC-17-13-SR21  
Precious Gold

Color: DMZ026021



# Tabletop Accessories

## Condiment Bowls with Condiment Spoons

### Condiment / Dipping Bowls

6,5x6,5cm / 2,6x2,6in, Height: 2,6cm/1in, Capacity: 30ml/1 oz

You can place 4 mini square (or round) condiment bowls along with their individual condiment spoons inside the long rectangle bento dinner plate; transforming it into a dipping bowl set.

Code: B5-S4-04



B5-S4-04-SR43



B5-S4-04-SR026



B5-S4-04-SR0450



B5-S4-04-SR422



B5-S4-04-X40



B5-S4-04-SR21



SC-01-13-BL  
Black



SC-01-13-BG  
Old Bronze



SC-01-13-GS  
Gold



SC-01-13-CP  
Copper



SC-01-13-SS  
Silver

### Salt & Pepper Holder with Salt Spoon

6,5x4,5cm / 2,6x2,6in, Height: 2,6cm / 1in, Capacity: 30ml / 1oz

The salt & pepper holder comes with a salt spoon and can be placed inside the long rectangle bento dinner plate. You might also want to add a napkin ring and a pair of cutlery rests, thus creating a proper personal cutlery case.

Code: SC-04-07-X40



Color: DMZ026021





# Tabletop Accessories

## Tabletop Sanitizing Caddies

### Wipes and Sanitizers Tabletop Caddy

Dimensions: 22x11cm/8.7x4.3, height: 20.5cm/8inch, Capacity: 945ml/32oz



### Square Covid-19 Safety Kit with Cover

Dimensions: 14x14cm/5.5x5.5, height: 6.8cm/2.6inch, Capacity: 770ml/26oz



SC-08-64-SS4220370-W



SC-08-64-SS3843-BK



SC-08-64-SS02910450-GT



SC-08-64-SR422-W



SC-08-64-RHZ422021-C



SC-08-64-DMZ026021-C



SC-08-64-RHZ43021-BK



SC-08-64-SR21-C



SC-08-64-CR422-W



SC-08-64-X40-T



SC-08-64-CR123-PE



SC-02-19-SS4220370-GS



SC-02-19-SS3843-BL



SC-02-19-SS02910450-GS



SC-02-19-SR422-SS



SC-02-19-RHZ422021-GS



SC-02-19-DMZ026021-BG



SC-02-19-RHZ43021-BL



SC-02-19-SR21-GS



SC-02-19-X40-SS



SC-02-19-CR123-BG

## *Front of the House Bento Dinner Plates*

A Gift Box. From Chef... to Guest.

### “Luxury Lunchbox” serve with covered bento plates in stacks

Stack covered bento dinner plates for guests to grab on their own like a lunch box. Great for lunch breaks, small catering events, happy hour, lobby lounge, coffee breaks and function room lunches. Compared to the open plates, the luxury lunchbox saves space on the counter because there is no need to align them on a counter but you can actually stack them one on top of the other. Due to the food grade silicone bumpers, lunchboxes do not slide when they are stacked.



### Wipe-able Dishes!

Wipe it from outside while the meal is still inside.



### Bento Dinner Plate Baskets to serve in multiple tiers

Use the basket available to serve a complete course in tiers. In the basket you can also mix and match different bento boxes. Baskets are available in 3 sizes: One for the small rectangular pair, one for the large square bento plate and one for the large pair. Metal coating is specified for use outdoors, under harsh weather conditions and withstands salt atmospheric corrosion. Metal baskets come in a variety of colors matching the color of the bento plates. This is a unique solution for room service presentation or small catering events.



Bento Basket for S5-S6-04, small rectangular Bento dinner plates (mix and match)



## Bento Baskets. *A Joy To Use!*

A memorable experience for the guest! A reason to come back.  
An environmentally sustainable solution, relevant to the Covid situation but an asset for long term  
A solution for in-room dining, coffee breaks, bar food and more...

"Picnic" type of Bento dinner plate baskets have exceptional advantages in **Safe, Contactless and Efficient meal delivery**, whether you need to deliver a meal to a guest room, a villa, in small events and coffee breaks, buffet, lobby lounge or function room.

- \* They all fit in a hot box to keep food warm, transported safely with a buggy, a room service trolley, a serving tray or by holding it from the handle.
- \* There are possibilities to prepare a variety of menus by using the basket in different dinner plate configurations as well as using them with 1, 2 or 3 tiers.
- \* It is a complete solution since it can incorporate cutlery case, condiment tray, table setting elements such as a napkin ring and personal salt and pepper holders.
- \* They are light-weight and easy to be carried by guests who do not wish room service trolleys (which rolled in kitchens, elevators, and basements) to enter their rooms.
- \* It allows for cold food (salads, desserts etc) to stay at the bottom tiers of the basket, while hot meals to be placed at the top tiers of the basket.





# Bento Dinner Plate *Baskets*

## Large Bento Basket



Large Bento Basket, 28x14cm / 11x5.5in, Height: 20cm / 8in,  
Capacity: 4.250ml / 144oz, Weight: 4.4kg / 9.7lbs

The large bento basket is comprised of one large rectangular bento dinner plate, 2 large square plates and 2 long rectangle plates. This "picnic" basket is great for food delivery in In-room dining as well as for delivery with buggies in resort villas and fits in hot boxes. Basket holds the large dinner plate where you can have the main course such as steak. In the large square plates you can have the appetizer, salad or dessert or the side dishes of the main course, such as chips and or you can use it as a bread basket. The long rectangle plates can be used: the first as a condiment tray (by adding the square condiment bowls) and the second as the cutlery case (optionally, along with napkin holder, salt and pepper holder and cutlery rest). In this way you have a complete meal delivered to the room. The basket can be placed outside the room on a folding butler tray and work as a "knock and drop" delivery.



SC-18-08-SS4220370-W



SC-18-08-SS3843-BK



SC-18-08-SS02910450-PE



SC-18-08-RHZ422021-G



SC-18-08-DMZ026021-G



SC-18-08-RHZ43021-BK



SC-18-08-CR422-W



SC-18-08-X40-PE



SC-18-08-CR123-PE



SC-18-08-SR422-W



SC-18-08-SR21-G

Color: RHZ422021



Bento Dinner Plate *Baskets*

Medium Bento Basket



Medium Bento Basket, 22x11cm/8,6x4,3in, Height: 20,5cm/8in, Capacity: 2.835ml/96oz, Weight: 2,7kg / 6lbs

The medium bento basket is made up of 3 tiered small rectangular bento dinner plates. A excellent solution for bar food and function rooms, in-room dining, small events and coffee breaks. You can serve main courses (for example pasta), desserts, finger food, appetizers and desserts. Along with the small rectangular dinner plate, you can also tier 2 small square dinner plates if you want to serve small side dishes or a soup.



SC-18-10-SS4220370-W



SC-18-10-SS3843-BK



SC-18-10-SS02910450-PE



SC-18-10-RHZ422021-G



SC-18-10-DMZ026021-G



SC-18-10-RHZ43021-BK



SC-18-10-CR422-W



SC-18-10-X40-PE



SC-18-10-CR123-PE



SC-18-10-SR422-W



SC-18-10-SR21-G

Color: DMZ026021



# Bento Dinner Plate Baskets

## Small Square Basket



Color: SS4220370

Small Square Basket, 14x14cm / 5,5x5,5in, Height: 20cm / 8in  
Capacity: 2.310ml / 78oz, Weight: 2,3kg / 5lbs

The small square bento basket consists of three tiered large square bento dinner plates. It is the perfect way to serve light, in-room dining lunches or appetizers, as a room amenity "bowl" for cheese, sliced fruit and pastry amenities. It can also be used as a covered high tea stand for the tea lounge, for bar food and finger food in the bar, for appetizers in the restaurant, as well as for small events and meetings as a lunch bag.

Code: SC-18-07



SC-18-07-SS4220370-W



SC-18-07-SS3843-BK



SC-18-07-SS02910450-PE



SC-18-07-RHZ422021-G



SC-18-07-DMZ026021-G



SC-18-07-RHZ43021-BK



SC-18-07-CR422-W



SC-18-07-X40-PE



SC-18-07-CR123-PE



SC-18-07-SR422-W



SC-18-07-SR21-G



# Bento Dinner Plate *Room Service Tray*

## Room Service Tray / Charger Plate

30x30cm / 12x12in, Height: 2cm / 0.8in

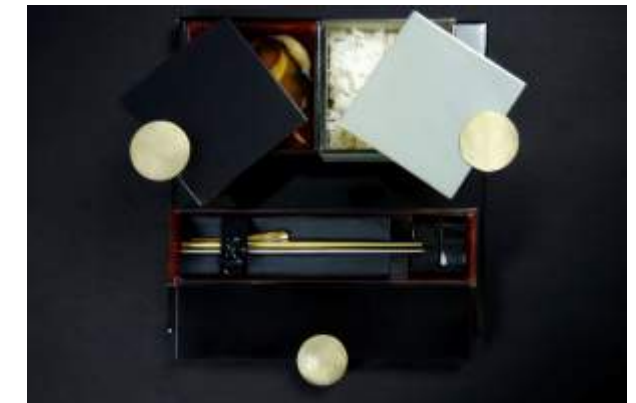
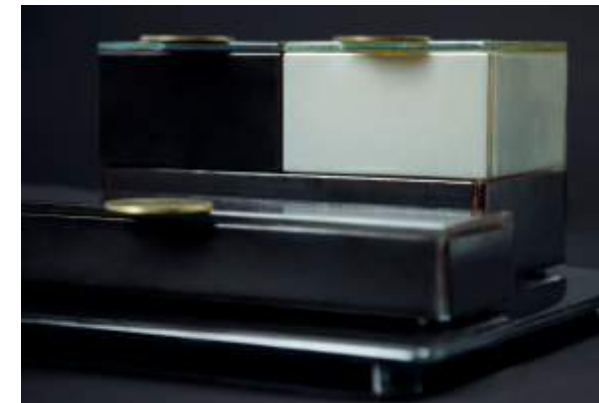
Room service tray to place the bento dinner plates with or without beverages as an amenity tray in the room. It grants more versatility in the bento dinner plate layout, allowing the use of dinner plates from both the small and the large pair of bento dinner plates to be combined. It is also a great charger plate for use in restaurants on which the menu can be placed neatly on a single tray or charger.



Small rectangular together with 2 large square dinner plates and an long rectangle bento dinner plate. *Color:* RHZ422021.



Small rectangular together with a cutlery case, napkin ring and cutlery rests. *Color:* RHZ43021.



Small rectangular dinner plate together with 2 small square plates and a cutlery case with napkin ring and cutlery rests. Black small square plate serving miso soup and the gray a portion of rice  
*Colors:* Ss3843 (black with inner red) and Ss02910450 (gray with inner old gold).



S1-F3-41-RHZ422021



S1-F3-41-RHZ43021



S1-F3-41-DMZ026021



S1-F3-41-SR43



S1-F3-41-CR422



S1-F3-41-CR123



S1-F3-41-SR21



S1-F3-41-X40



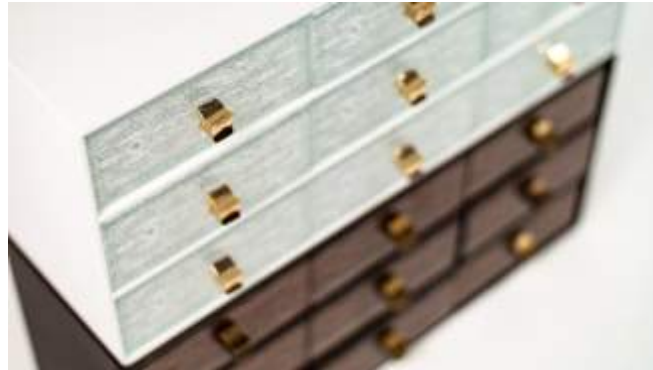
# Buffet “Grab & Go”

## 9 Part Bento Dinner Plate Server

### 9 Part Grab&Go Bento Server for Executive Lounges

Dimensions: 43.5x14cm / 17.1x5.5inch, height: 19.5cm / 7.7inch, Code: F2-16-06

Buffet Grab&Go bento server with 9 bento lunch box drawers with handles and covers for individual portions for the post-covid world. Two or more bento servers can be stacked one on top of the other. Bento server can be refilled from the back (both sides are open) and guests can retrieve from the front. Bento servers can be placed back to back and guests can retrieve from both sides. A good solution for executive lounges, coffee breaks and small events.



F2-16-06-CR43-BK



F2-16-06-CR026-C



F2-16-06-X40-PE



F2-16-06-CR422-W



F2-16-06-CR0450-PE



F2-16-06-CR021-W



# *Back of the House Bento Dinner Plates*

Gift Box. From Chef... to Guest.

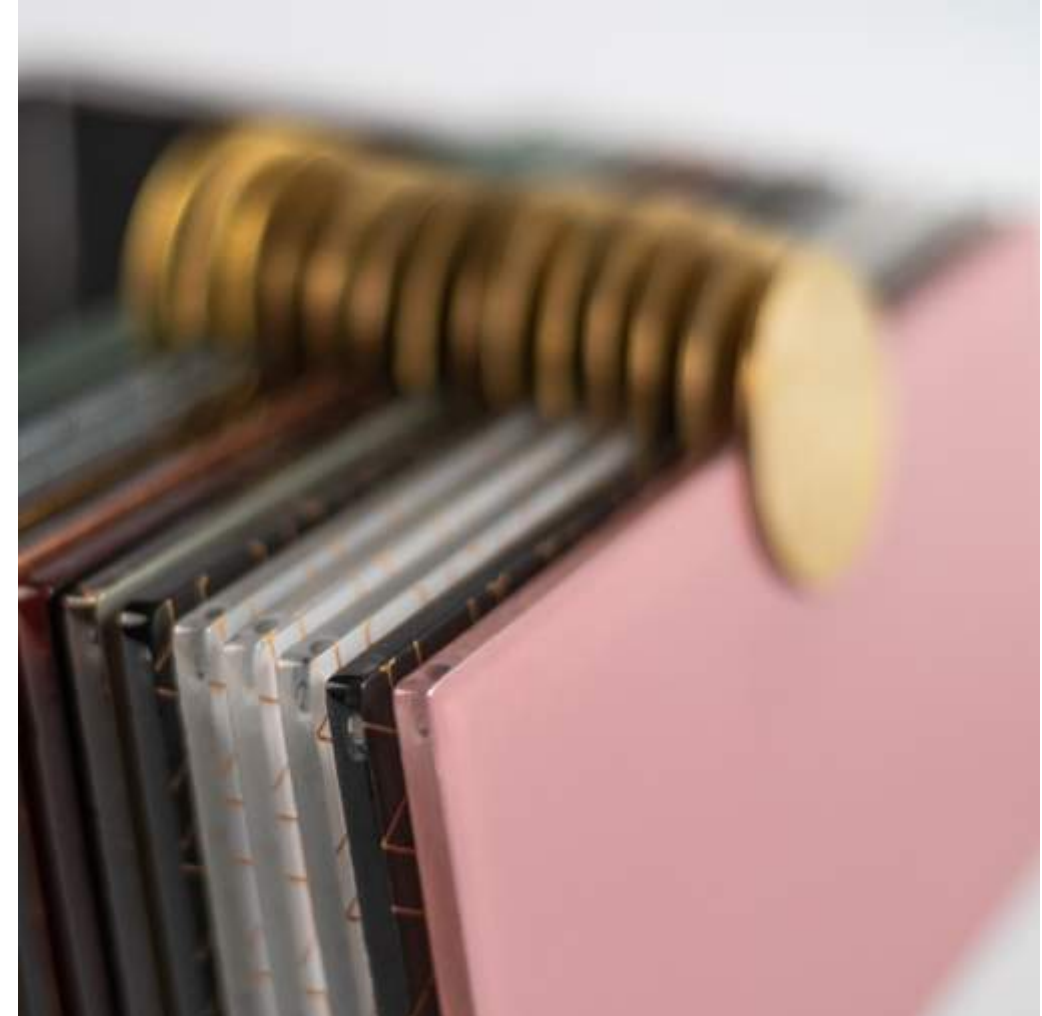
## Kitchen storage of bento plates

You can stack bento boxes without their covers, one on top of the other up to a height of 10-15 pieces and save space in storage.



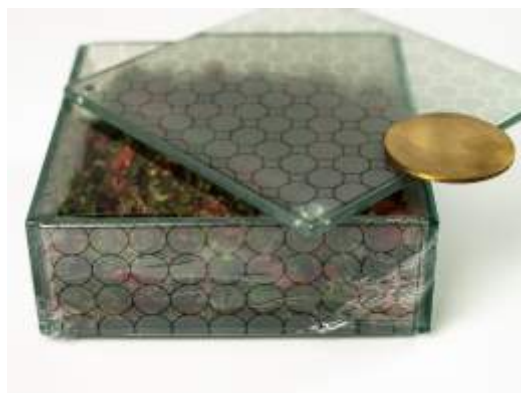
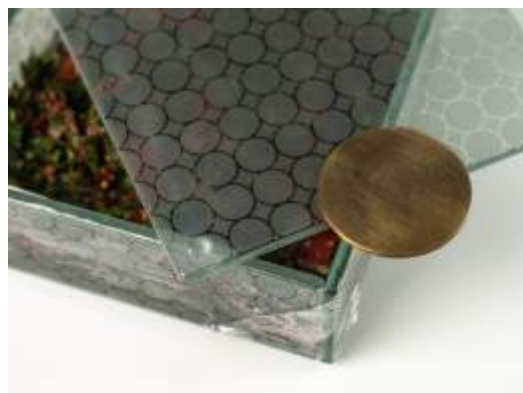
## Kitchen storage of bento covers

You can stack bento covers, one on top of the other up to a height of 30 pieces. You can also stack them sideways.



## Shrink wrap meals under cover and stack them

Keep food fresh in the refrigerator. Use the Bento Dinner Plate as meal prep without having to think about disarranging proper plating



## Bumpers

Bumpers enable bentos to "lock" one on top of another when without cover. When with cover, bumpers lift the boxes above the handles enabling to stack closed boxes.



## Food Safe Silicone Assembly

We use "food grade" silicone in the assembly of our bentos. This means that it is non-toxic and more environmentally friendly than shrink-wrap



# The Testimonials

## What do our clients think



*“Glass Studio's ideas are amongst the most original that I have ever commissioned. They **blend inspiration with craftsmanship** in the most unique way...”*

Kristoffer Luczak,  
Past: VP F&B, COD, Macau  
Executive VP F&B, Wynn Macau, Wynn Palace



*«Every time I've done custom work with Glass Studio, the guests have been blown away. I love the **quality of their work** and their design flexibility!”*

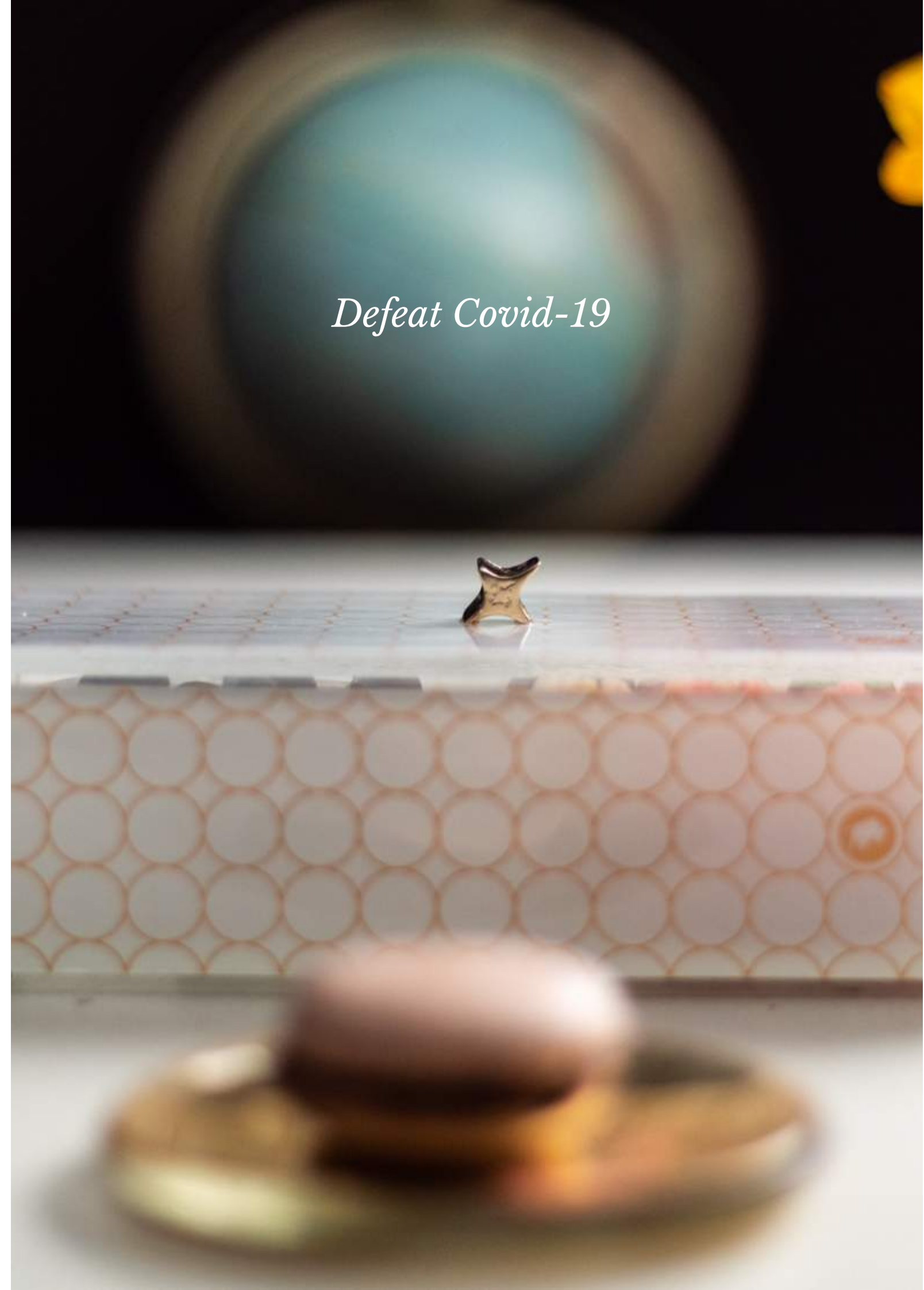
Sebastien Silvestri  
Past: SVP of F&B, SBE Las Vegas  
CEO The Dinex Group - Daniel Boulud



*“MyGlassStudio offers creativity and a real flair for design. We have worked with them for many years and they **never fail to deliver a fantastic product.**”*

Mark Askew,  
Past: Gordon Ramsay's Group Executive Chef  
Director at The Ivy Collection

*Defeat Covid-19*



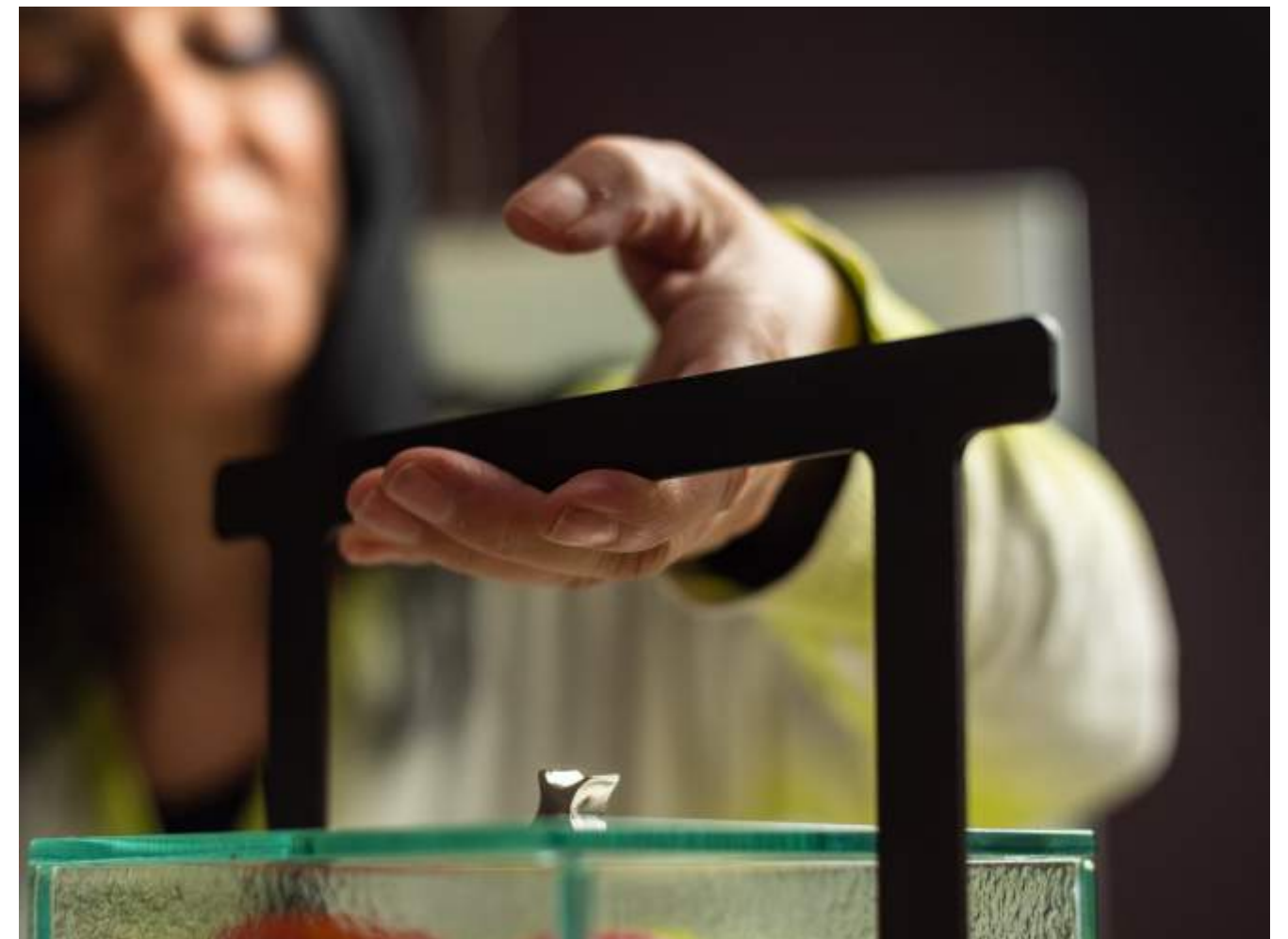


*...and When Covid-19 is Defeated*

Use your Collection  
in your  
Room Amenity Program



Code: S5-S6-03-RH026, Small Rectangular Bento Dinner Plate





# MyGlassStudio Client List 2019

**AMERICAS** **New York** The Plaza, Mandarin Oriental, Ritz Carlton Battery Park, Ritz Carlton Central Park, St. Regis, Aureole, Nobu 57, The Modern, Gordon Ramsay, Grand Hyatt NY, Loews Regency Hotel, The New York Palace , The Quin NY, Rainbow Room at Rockefeller Plaza, Pier a Harbor House. **Las Vegas** The Venetian, Wynn Resort, Bellagio Resort, Mandalay Bay, MGM Grand Hotel & Casino, Charlie Palmer Steak, Wolf Gang Puck, Caesars Palace, Cut, Trump International Hotel & Tower, Il Palazzo, Mandarin Oriental, Vdara Las Vegas, Aria Resort & Casino, The Cosmopolitan of Las Vegas, Westgate Las Vegas Resort & Casino **San Francisco** Four Seasons, Ritz Carlton, St. Regis, Gary Danko, Park Hyatt, Grand Hyatt, Ritz Carlton Half Moon Bay **Los Angeles** Regent Beverly Wilshire, Spago Beverly Hills, CUT, Montage Resort & Spa, Hyatt Huntington Beach, Four Seasons at Beverly Hills, The Beverly Hills Hotel & Bungalows, The US Grant California Four Seasons Westlake Village, The Island Newport Beach, Hyatt Newport Beach, Intercontinental Los Angeles Downtown, Jw Marriott, Loews Hollywood Hotel **Miami** Mandarin Oriental, Intercontinental, The Ritz Carlton Key Biscayne, Hyatt Regency, Barton G., Conrad, Four Seasons, Ritz Carlton South Beach, Ritz Carlton Palm Beach, Breakers Hotel , Setai South Beach, Hard Rock Hotel & Casino Hollywood, Hard Rock Hotel & Casino Tampa, Four Seasons Hotel At The Surf Club, Faena Hotel, Chotto Matte **Orlando** The Ritz Carlton Grande Lakes, Hyatt Regency Grand Cypress, Four Seasons Orlando at Walt Disney World Resort **Scottsdale** Four Seasons Troon North, JW Marriott Desert Ridge, Sanctuary on Camelback **Chicago** Four Seasons, The Ritz Carlton, Everest, Tru, Radisson Blu Aqua, Swissotel, Park Hyatt, Trump International Hotel & Tower Chicago. **Dallas** Charlie Palmer restaurant, Joule **Fort Lauderdale** Ritz Carlton, Atlanta Four Seasons, W **Atlanta**, Ritz Carlton, Mandarin Oriental **Boston** Four Seasons **Houston** The Post Oak Hotel At Uptown Houston **Washington** Four Seasons, The Ritz Carlton (Maestro), St Regis, The Ritz-Carlton Westchester, Shangri-La Hotel Vancouver **Toronto** Four Seasons Toronto, The Ritz Carlton Toronto, Fairmont Pacific Rim Hotel Shangri-La Toronto **Vancouver** The Westin Bayshore

**MIDDLE EAST & AFRICA** **Riyadh** Al Faisaliah, Four Seasons, Intercontinental, Marriott, Moevenpick, Kempinski Burj Rafal, Rosewood Durrat, Nobu Hotel, Fairmont, Courtyard, Ritz Carlton, Palace Riyadh , Hilton Granada , Leylaty Jeddah **Makkah** Raffles Clock Tower, Swiss Clock Tower, Conrad, Marriott, Hyatt Regency, Fairmont, Hilton Convention Center **Jeddah** Corniche a Rosewood Hotel, Hilton, Crowne Plaza, Lumiere Restaurant Jeddah, Intercontinental, Bay La Sun, Sofitel, Ritz Carlton, Rocco Forte Assila, Park Hyatt, Centro Rotana **Kuwait** Jumeirah Messilah, Symphony style hotel, Regency Palace, Four Seasons **Doha** Ritz Carlton, Four Seasons, Al Sharq Village and Spa, W Doha, Marriott Marquis, Rotana Oryx, Diplomatic Club, Shangri La Doha, Rotana City Center, The Torch, Hilton, Intercontinental The City, St. Regis Doha, Crowne Plaza The Business Park, Guy Savoy, Souq Waqif Boutique Hotels, AKH-Aspire Hospitality, Westin, Eatopia, Tamarind restaurant, Anantara, Marsa Malaz Hotel Kempinski, Debs W Remman, Sheraton Grand Resort & Convention Hotel, Mandarin Oriental, Alwadi M Gallery, Intercontinental Doha Hotel And Residences, **Bahrain** Ritz Carlton, Gulf Hotel, Moevenpick, Sofitel Zallaq, **Dubai** Burj Al Arab, Emirates Towers, Park Hyatt, Ritz Carlton DIFC, Madinat Jumeirah, Hyatt Regency, Desert Palm Resort, Jebel Ali Golf Resort & Spa, Intercontinental Dubai Festival City, The Fairmont, Grand Hyatt, Atlantis the Palm, The H-Hotel, Sofitel Dubai, The Address Dubai Mall and Address Down Town Hotel, JW Marriott Marquis, Sofitel Palm Jumeirah, Fairmont the Palm, Oberoi-Bussiness Bay, Al Manzil, Vida Hotel, Intercontinental Dubai Marina, Sofitel The Palm Resort & Spa, Sofitel Burj Khalifa, Dubai Marriott Hotel Al Jaddaf, Waldorf Astoria Palm Jumeirah, Four Seasons Jumeirah, Jumeirah Lake Towers, Pullman Lake Towers, Habtoor Grand Resort & Spa, GQ Bar, **Abu Dhabi** Emirates Palace, Shangri-la, Aloft Abu Dhabi, Fairmont Bab Al Bahr, Anantara Qars Al Arab, Crown Plaza Yas Island, St. Regis Saadiyat, Westin, Hilton Capital Grand, Park Hyatt, Ritz Carlton, Dusit Thani, Rosewood Abu Dhabi, Intercontinental, Hyatt at Capital Gate, Courtyard World Trade Center, Southern Sun, St. Regis Nation Towers, **Muscat** The Chedi, Grand Hyatt, Intercontinental, Duqm, Mysk By Shaza Al Mouj, Grand Millennium **Amman** Four Seasons, Grand Hyatt, Marriott Aqaba

**ASIA-AUSTRALIA** **Singapore** Six Senses Duxton, Sofitel City Centre, Beauford Hotel, Fullerton Hotel, Grand Copthorne, Raffles Hotel, Grand Hyatt, Four Seasons, Sheraton Towers, St. Regis, Aman Resorts, Gallery Hotel, Shangri-la, Mandarin Oriental, Fairmont Singapore, The Ritz-Carlton, Capella Sentosa, Park Royal on Pickering, Marriott Singapore, Marina Bay Sands, The Fullerton Bay Hotel, One Farrer Hotel & Spa **Hong Kong** Cordis Hong Kong At Langham Place , Four Seasons, Disneyland Hotel, Conrad, Intercontinental, Island Shangri-La, Mandarin Oriental, Marco Polo, Kowloon Shangri-la, Langham Place, Watermark, The Ritz Carlton, Peninsula, Pacific Club **Macau** Legend Palace Hotel, Crown Casinos, Grand Lisboa Hotel, St. Regis Cotai Strip, Studio City Morpheus ,Wynn, Lisboa Hotel, The Venetian, Galaxy Starwood, MGM Grand, Sofitel, Sands, Four Seasons, Altira, Banyan Tree Resort, Sheraton, Conrad , Starworld Hotel Galaxy, Galaxy, Okura, Ritz-Carlton, JW Marriott Genting Resorts World Genting **Beijing** Four Seasons Beijing, Aman at Summer Palace Beijing, St. Regis Beijing, The Peninsula Palace, Shangri-La, W Beijing Changan Lijiang Pullman Lijiang Resort & Spa **Shanghai** Capella Shanghai Jian Ye Li, Wanda Reign on the Bund, Grand Hyatt, Pudong Shangri-La, Hilton, Peninsula Shanghai, Banyan Tree North Bund Shanghai, Twelve at Hengshan Shanghai - The Luxury Collection, Shangri La JingAn Shanghai, The Langham Xintiandi **Tokyo** Grand Hyatt, Mandarin Oriental, Conrad, Four Seasons, The Prince Park Tower Hotel, Renaissance Tokyo Hotel, L'Osier, Patina restaurant, Aioke restaurant, Hyuri Kamogawa Terrace, Park Hyatt Tokyo, Hyatt Regency Tokyo, Ritz Carlton Tokyo, Shangri-la, The Peninsula Tokyo, Hilton Tokyo, Hilton Tokyo Odaiba, Hilton Tokyo Bay, The Prince Gallery Tokyo Kioicho , Intercontinental Tokyo, Palace Hotel , Tokyo Baycourt Club **Kyoto:** Miyama-so, Takarazuka Hotel, Myako, Ritz Carlton, Take restaurant, Hyatt Regency Kyoto, Suiran Luxury Collection Hotel Kyoto, Hotel Granvia Kyoto, Brighton Hotel, XIV Kyoto Yase Rikyu **Osaka** Ritz Carlton, Westin, Osaka Marriott Miyako Hotel **Korea** JW Marriott Seoul, Hilton Seoul, W Seoul, Conrad Seoul, Jeju Shinhwa World, Lotte Hotel Busan **Vietnam** Heritage Le Meridien Saigon, Intercontinental Hanoi Landmark 72, Sofitel Metropole Hanoi, Sheraton Nha Trang Hotel and Spa Banyan Tree Lang Co Hue, Angsana Lang Ho Hotel, MGM Grnad Ho Tram, Lotte Hotel **Manila** New World Makati City, Hilton Resorts World, Marriott Hotel, Shangri-La At The Fort, Okada, Shangri-La Mactan, Solaire, City of Dreams, Nobu, Sofitel Philippine Plaza Hotel **Indonesia** W Retreat and Spa Bali Seminyak, Banyan Tree Ungasan Bali, St. Regis Bali, Four Seasons Hotel Business District, Sheraton Gandaria, Hotel Mulia Senyan, Fairmont Jakarta **Myanmar** Hotel Kempinski Yangon, Pullman Mandalay Mingalar **Thailand** Anantara Lawana Resorts And Spa, Bangkok The Oriental, The Landmark, St. Regis Bangkok, Shangri La Bangkok **Malaysia** The Danna Lankgawi, W Hotel, Banyan Tree Signature Pavilion Kuala Lumpur, Shangri-La's Rasa Ria Resort, Mandarin Oriental Kuala Lumpur **Cambodia** Nagaworld **Taipei** Mandarin Oriental **Mauritius** Royal Palm, The Beachcomber Paradise Hotel and Golf Club, The St. Regis Resort Mauritius, The Grand Mauritian Resort & Spa **Seychelles** Four Seasons, Raffles **Maldives** Kandima Resort ,The St. Regis, Maldives Vommuli, Conrad Rangali Island, Sheraton Full Moon , Kurumba Resort Maldives , One & Only, Komandoo Island Resorts and Spa, Taj Exotica Maldives, Kuredu Island Resort & Spa, Four Seasons Resort Maldives At Landaa Giraavaru **India** The Taj Mahal Palace and Towers Mumbai, The Taj Palace Hotel New Delhi, The Westin Gurgaon New Delhi, The Westin Mumbai Garden City, The Westin Pune Koregaon Park, ITC Royal Gardenia Bangalore , Jaypee Vasant, Continental, Sheraton Bangalore , The Leela New Dehli, The Leela Bangalore, The Ritz-Carlton Bangalore, Fairmont Hotel Jaipur, Grand Hyatt Goa, **Sydney** Crown Casino, Hilton, Sheraton On The Park **Melbourne** Crown, Sheraton, Melbourne Racing Club Brisbane W Hotel **New Zealand** OKO Dessert Kitchen Auckland Restaurant, Sofitel Wellington

**EUROPE** **Paris** Plaza Athenee, The Ritz, Four Seasons George V, Park Hyatt Place Vendome, Hyatt Regency Paris-Madeleine, Le Royal Monceau-A Raffles Hotel, L'Envue, Hotel de la Tremoille, Pullman Tour Eiffel, The Peninsula Paris **London** Dorchester, Carlton Tower, Claridge's, Le Gavroche, Pied a Terre, Gordon Ramsay, Four Seasons Canary Wharf & Four Seasons Park Lane, Ritz London, 45 Park Lane, Intercontinental Park Lane, Grosvenor House, Berkeley Hotel, Rocco Forte Brown's Hotel, The Connaught at Maybourne, Quilon Restaurant & Bar, The Fairmont Savoy, Landmark London, Dukes hotel, Bulgari Hotel London, Four Seasons Trinity, Shangri la Shard, Dakota Deluxe Leeds, Marriott Hotel Park lane, Stallion Ai Services London, Ivy Collection Restaurants, Chotto Matte **Rome** Waldorf Astoria Cavalieri, Rocco Forte Hotel De Russie **Milan** Park Hyatt, Bulgari, Excelsior Gallia **Capri** Capri Palace Hotel Hapimag Resort Cefalu **Amsterdam** Hotel Okura, Intercontinental Amstel, Waldorf Astoria, Hilton, W Hotel, MSC Cruises **Berlin** Kempinski Adlon, Grand Hyatt **Munich** Mandarin Oriental **Frankfurt** Jumeirah **Dusseldorf** Hyatt Regency **Algarve** Conrad **Brussels** Steigenberger, Rocco Forte Hotel Amigo **Barcelona** Hotel Arts Barcelona W Barcelona **Geneva** Beau-Rivage Palace, Four Seasons Des Bergues, Le Richmond **Lausanne** Royal Savoy **Zurich** Park Hyatt, Marriott Zurich, Hotel Atlantis By Giardino **Budapest** Four Seasons, Marriott **Prague** Hilton **Monaco** Societe des Bains de Mer **Cannes** The Grand Hotel Cannes **Dublin** Four Seasons, The Shelbourne, Conrad **Warsaw** Raffles Europejski Hotel **Vienna** Hilton **Moscow** Park Hyatt Ararat, Lotte Hotel, Four Seasons, The Ritz-Carlton, Baltschug Kempinski Hotel St , Hilton St. Petersburg Concord Catering, Four Seasons Lion Palace

## EUROPE - MIDDLE EAST

anna@myglasstudio.com

Mob: +359878694588

## EUROPE - MIDDLE EAST

nana@myglasstudio.com

Mob: +306944653526

## AMERICAS

emanuela@myglasstudio.com

Mob: +359897971676

## JAPAN

kami-chan@myglasplate.jp

Office: +81 9030380450

## AUSTRALASIA

riccardo@myglasstudio.com

Mob: +359877540548

## MIDDLE EAST - AFRICA

jenny@myglasstudio.com

Mob: +306946120893

## INDIAN OCEAN - AFRICA

fenia@myglasstudio.com

Mob: +359878754548

## SOUTH - EAST ASIA

militsa@myglasstudio.com

Mob: +38970273701



MyGlassStudio  
Defeat Covid-19

www.the-glass-co.com