

Model QWC123S
Shown



QUICK SERVICE WALL CUPBOARDS



Introducing Quick Service
A range of popular sized, short lead time, high quality commercial fabrication products, held in stock and all available within 2-6 working days after order.

SLIDING DOOR TYPE 300mm DEEP



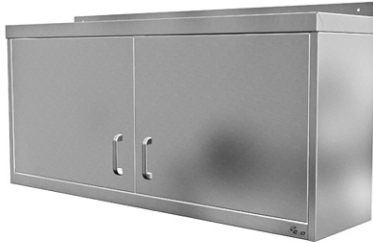
WALL CUPBOARD (SLIDING DOOR)

SPECIFICATION

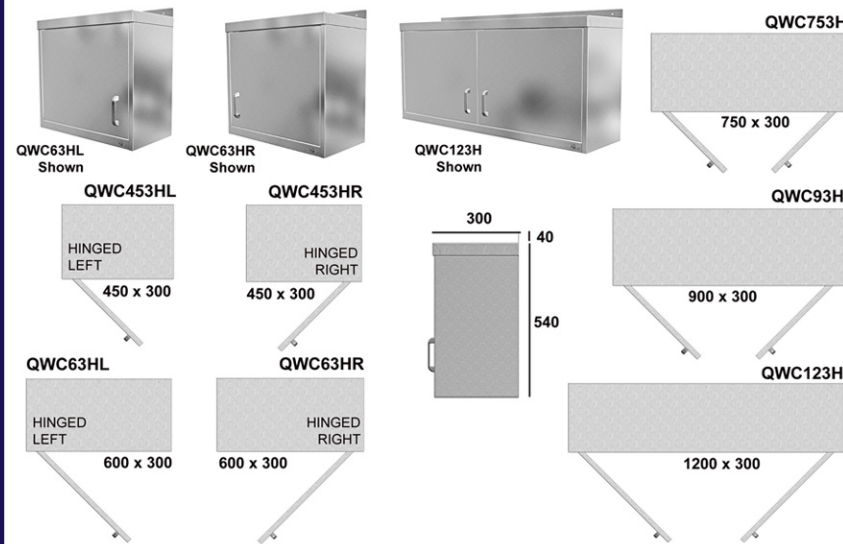
- ✓ Wall mounted commercial s/steel fully enclosed storage cupboard.
- ✓ Panels, doors, top & base shelf constructed in 430 gd (0.9 thk.) s/steel.
- ✓ Available in 900, 1000, 1200, 1500 & 1800mm standard lengths.
- ✓ Adjustable height 430 gd (1.2 thk.) s/steel storage mid-shelf.
- ✓ Standard cupboard height 540 mm.
- ✓ Standard cupboard depth 300 mm.
- ✓ Rear up stand to roof for sealing against a surface where items may be stored on top.
- ✓ Roof upstand fixing holes size Ø 7.2mm.
- ✓ Full height flush steel back panel.
- ✓ Wall mounting hooks supplied.
- ✓ Sliding door models feature top hung sliding steel doors (inner/ outer panel type) fitted with chrome D handles.
- ✓ Sliding door models fitted with central door channel guides.

Code	Description	Height (mm)	Weight (kg)
QWC93S	900 (L)×300 (D) Wall Cupd. (Sliding Door)	540	31
QWC103S	1000 (L)×300 (D) Wall Cupd. (Sliding Door)	540	33
QWC123S	1200 (L)×300 (D) Wall Cupd. (Sliding Door)	540	39
QWC153S	1500 (L)×300 (D) Wall Cupd. (Sliding Door)	540	47
QWC183S	1800 (L)×300 (D) Wall Cupd. (Sliding Door)	540	55

Model QWC123H
Shown



HINGED DOOR TYPE 300mm DEEP



WALL CUPBOARD (HINGED DOOR)

SPECIFICATION

- ✓ Wall mounted commercial s/steel fully enclosed storage cupboard.
- ✓ Outer panels, doors, top & base shelf constructed in 430 gd (0.9 thk.) s/steel.
- ✓ Available in 450, 600, 750, 900 & 1200 mm standard lengths.
- ✓ Adjustable height 430 gd (1.2 thk.) s/steel storage mid-shelf.
- ✓ Standard cupboard height 540 mm. Standard cupboard depth 300 mm.
- ✓ Rear up stand to roof for sealing against a surface where items may be stored on top. (Roof upstand fixing hole size Ø 7.2mm).
- ✓ Full height flush steel back panel.
- ✓ Wall mounting hooks supplied.
- ✓ Hinged door models feature side hung steel doors (inner/ outer panel type) fitted with chrome D handles.

Code	Description	Height (mm)	Weight (kg)
QWC453HL	450 (L)×300 (D) Wall Cupd. (L.Hinged Door)	540	18
QWC63HL	600 (L)×300 (D) Wall Cupd. (L.Hinged Door)	540	21
QWC453HR	450 (L)×300 (D) Wall Cupd. (R.Hinged Door)	540	18
QWC63HR	600 (L)×300 (D) Wall Cupd. (R.Hinged Door)	540	21
QWC753H	750 (L)×300 (D) Wall Cupd. (Hinged Doors)	540	26
QWC93H	900 (L)×300 (D) Wall Cupd. (Hinged Doors)	540	30
QWC123H	1200 (L)×300 (D) Wall Cupd. (Hinged Doors)	540	37

Model QAWC753H
Shown



ANGLED CORNER (DOOR) TYPE 750mm ANGLE CORNER



ANGLED CORNER WALL CUPBOARD

SPECIFICATION

- ✓ Wall mounted commercial s/steel fully enclosed angled corner storage cupboard.
- ✓ Outer panels, doors, top & base shelf constructed in 430 gd (0.9 thk.) s/steel.
- ✓ Available in a 750mm standard angled corner length.
- ✓ Adjustable height 430 gd (1.2 thk.) s/steel storage mid-shelf.
- ✓ Standard cupboard height 540 mm. Cupboard shelf depth - up to 690 mm.
- ✓ Rear upstand to roof for sealing against a surface when items may be stored on top. (Roof upstand fixing hole Size Ø 7.2mm).
- ✓ Full height flush steel back panel.
- ✓ Wall mounting hooks supplied.
- ✓ Side hung steel doors (inner/ outer panel type) fitted with chrome D handles.

Code	Description	Height (mm)	Weight (kg)
QAWC753H	820 (W)×820 (D) Angle Cnr. Wall Cupd.(Door) (750mm Opening Angle Corner).	540	39

Download All Technical Drawings From
www.cedfabsltd.co.uk



Tel : 01254 238 282

CED Fabrications Limited
Units A1-A4 Falcon Court
Clayton Business Park
Clayton-Le-Moors
Hyndburn
Lancashire
BB5 5JD

www.cedfabsltd.co.uk
sales@cedlimited.com

